







SARMIENTO.—The 'Schoolmaster'—Famous President of Argentina

By EDWARD C. JOHNSON
Non-secular instruction in higher education can be traced to the fundamental base of present Argentina.

LEGAL NOTICES

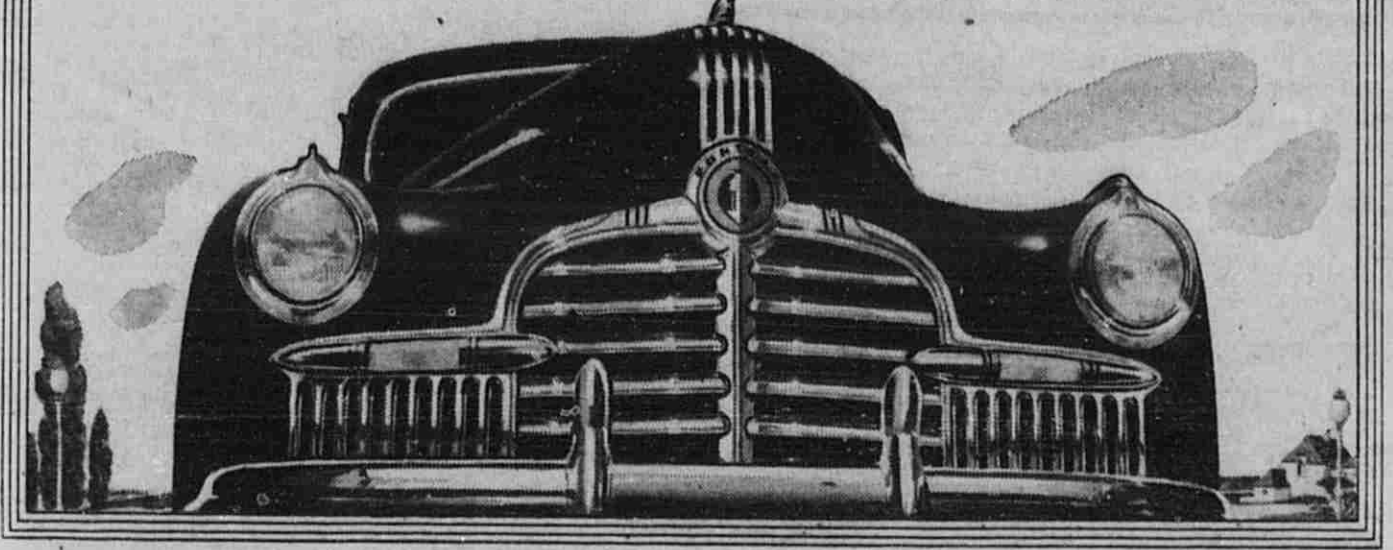
APPOINTMENT OF ADMINISTRATOR
In re: Estate of John T. Smith, Deceased.
The Probate Court for the County of Kent...

BOWNE BUGLE NOTES

Bowme Club PTA
The Bowme Club PTA met at the Aid Hall Friday night...

Now when quality and long life mean more than ever

Pontiac gives you new models with 15 improvements over last year's great success!



Presenting 10 Great New Pontiacs™ 1942 and 15 new ones too!

A MIGHTY pleasant surprise awaits you when you see and drive the new 1942 Pontiacs...

L. E. JOHNSON
4489 East 11th St., Lowell, Mich.
Pontiac Dealer

By EDWARD C. JOHNSON
Non-secular instruction in higher education can be traced to the fundamental base of present Argentina.

Non-secular instruction in higher education can be traced to the fundamental base of present Argentina.

ORDER APPOINTING TIME FOR HEARING
In re: Estate of John T. Smith, Deceased.

ORDER APPOINTING TIME FOR HEARING
In re: Estate of John T. Smith, Deceased.

ORDER APPOINTING TIME FOR HEARING
In re: Estate of John T. Smith, Deceased.

ORDER APPOINTING TIME FOR HEARING
In re: Estate of John T. Smith, Deceased.

McCORD'S MATTERS

McCORD'S MATTERS
Mrs. R. T. Williams
Mrs. Mary Clark and children visited Mrs. Hurling...

YOUR ADVERTISING

REMEMBER, the success of your sale depends upon a large number of active bidders.

The Lowell Ledger

The Ledger reaches practically all of the farm homes in the eastern half of Kent county, with large coverage in Western Ionia county.

Church News

ZION METHODIST CHURCH
German preaching and Communion service and Bible School at 11 o'clock.

FIRST METHODIST CHURCH
'Church Light Sunday' will be observed next Sunday at 11 o'clock.

VERGENES METHODIST CH.
Next Sunday morning at 9 o'clock there will be an observance of the Centennial...

SOUTH LOWELL CHURCH
Every Sunday at 2:45 p. m. Rev. Carl W. G. Baker, Pastor.

CATHOLIC PARISHES
Rev. Fr. J. E. Brown, Pastor
8:00 a. m. Low Mass and sermon.

W. B. SHEPARD, M. D.
Office Hours: 2 to 4 and 7 to 10 p. m.
Office Phone 38

Ada News

President's Day Observed
Club work will swing into its full activities with the opening of the year book committee...

W. R. Kolschberger, Pastor
Subject, 'Celebration of the Lord's Supper'.

SUNDAY SCHOOL AT 11:15
Subject, 'The Personal Element in Christianity.'

W. R. Kolschberger, Pastor
Subject, 'The Personal Element in Christianity.'

W. B. SHEPARD, M. D.
Office Hours: 2 to 4 and 7 to 10 p. m.
Office Phone 38

WISCONSIN CHEESE 30c
A & P CORN 10c
IONA TOMATOES 10c

SOAP FLAKES 25c
SOAP GRAINS 29c
SOAP CLEANERS 19c

WISCONSIN CHEESE 30c
A & P CORN 10c
IONA TOMATOES 10c

DONUTS 12c
HEAD LETTUCE 9c
APPLES 25c

WISCONSIN CHEESE 30c
A & P CORN 10c
IONA TOMATOES 10c

WISCONSIN CHEESE 30c
A & P CORN 10c
IONA TOMATOES 10c

WISCONSIN CHEESE 30c
A & P CORN 10c
IONA TOMATOES 10c

WISCONSIN CHEESE 30c
A & P CORN 10c
IONA TOMATOES 10c

WISCONSIN CHEESE 30c
A & P CORN 10c
IONA TOMATOES 10c

WISCONSIN CHEESE 30c
A & P CORN 10c
IONA TOMATOES 10c

MR. MERCHANT THE EYES OF THE COMMUNITY WOULD BE ON YOUR AD IF IT HAD BEEN IN THIS ISSUE

Wings Over America
Twenty 'wings' or local branches, one to each of the Latin American republics...

Public Notices
State of Michigan. The Probate Court for the County of Kent...

Public Notices
State of Michigan. The Probate Court for the County of Kent...

Public Notices
State of Michigan. The Probate Court for the County of Kent...

Public Notices
State of Michigan. The Probate Court for the County of Kent...

Public Notices
State of Michigan. The Probate Court for the County of Kent...

