

SPRINGPORT BOOK BINDERY
HOAG & SONS
SPRINGPORT, MICH. 49284

The Grand Valley Ledger

Serving Lowell Area

Readers Since 1893

October 25, 1978

Volume 3, Issue 50

Flood Plain Study Due Soon

Scheduled to begin soon in the Lowell area are the preliminary studies required for a federal program which may benefit many local residents.

Under contract with the Federal Insurance Administration of the U.S. Department of Housing and Urban Development, Gove Associates Inc., a consulting firm based in Lansing and Kalamazoo, will perform detailed

surveys and engineering studies of flood-hazard areas—both developed and undeveloped—in the vicinity of Lowell.

In the near future, Gove professional personnel will visit the area to examine and evaluate locations subject to flooding. Product of this work will be the precise flood-elevations that the communities will need in order to carry out the flood-manage-



Flooding in the early spring of 1976 followed a major ice storm which brought the area to a standstill. Recreation Park and the 4-H Fair buildings are often under water as the Grand River overruns its banks.

ment objectives of the National Flood Insurance Program, and to set appropriate flood-insurance premiums for existing and proposed structures and for their contents.

Of further benefit to communities and individuals from these studies will be data that will enable appropriate local planning to eliminate or minimize losses from floods, and that will help assure quicker and more equitable compensation for losses and damages caused by flooding.

Funded by the Federal Insurance Administration, these studies are authorized by the National Flood Insurance Act of

1968 (P.L. 90-448), as amended; and by the Flood Disaster Protection Act of 1973 (P.L. 93-243).

As contractor for the Federal Insurance Administration, Gove Associates wishes to notify all persons who may have an interest in the commencement of these studies, so that all may have opportunity to advise the F.I.A. of any relevant facts and technical data concerning local flood hazards that should be considered in the course of the studies.

Such information should be furnished to Mr. Ray Quada, City Manager, 301 East Main St., Lowell.

Goal Two-Thirds Achieved

Drive In The Home Stretch

It was determined at the October 23 meeting of the Re-Float the Lowell Showboat Committee, that approximately two-thirds of the fund drive's goal of \$50,000 had been reached in either cash or pledges. This leaves a major sum of money left to be raised in the single week remaining prior to November 1 which is the end date of the official fund drive.

The committee, after reviewing the various divisions, still feels that with an all-out effort on everyone's part, the goal could yet be achieved by November 1.

Early results from a Grand Rapids Chamber of Commerce mailing list, which was used to solicit funds, are encouraging. The mailing was only sent out a week ago, so it is too early to tell what the full potential of this drive may generate.

The committee is very hopeful that the goal will be reached by the next weekly meeting. Addi-

tional special events are planned to be held over the next several months to insure that the Lowell Showboat will indeed

be "refloated" in time for the 1979 season. These special events include the continuation of the "New Car Raffle" with a

new auto donated by the Lowell Automobile Dealers as the prize, a Las Vegas Night, dances, etc.

Amway Sales Break Half-Billion Mark

Amway Corporation announced today that retail sales figures for fiscal year 1977-78 show an increase of \$125 million over the previous year, the largest gain in the Michigan company's 19-year history.

Chairman of the Board Jay VanAndel and President Richard DeVos, co-founders of Amway Corporation, announced consolidated corporate revenues in excess of \$400 million, which includes the subsidiaries and affiliates of Amway's international organization. Translated to sales at the retail level, that amounts to sales in excess of \$500 million.

The increase of \$125 million, up from \$375 million last year, is more than the corporation's total retail sales in 1970.

Amway's growth over the past year has resulted in the addition of 274 full-time positions at the Ada headquarters, and company officials estimate another 300 positions will be filled in the coming year.

Amway was founded in 1959 by VanAndel and DeVos and today manufactures and markets more than 200 home-, car-, and personal-care products, cosmetics and fragrances, and commercial and institutional maintenance products. A network of 300,000 independent distributorships also markets, on a

person-to-person basis, Nutrilite Food Supplements, housewares and appliances, and Personal Shoppers Catalog brand-name merchandise.

DeVos and VanAndel pointed out that the new sales figures reflect Amway's 19th record-breaking year and attribute the company's success to the enthusiasm and hard work of Amway independent distributors and employees in the United States and eight foreign countries.

In September of 1977, Amway Corporation announced the acquisition of the Mutual Broadcasting Corporation, the world's largest radio network. In August of this year, the company announced the purchase of an historic Grand Rapids landmark, the Pantlind Hotel, which will be restored under the company's guidance to its original splendor and elegance.

A multi-million dollar construction project is now under way at Amway world headquarters in Ada, Mich., as Amway continues to enlarge its manufacturing facilities and corporate offices to accommodate the tremendous growth. The expansion will include more than 150,000 square feet at a cost of \$9 million and follows on the heels of an earlier \$5 million construction program that was completed last year.

When this latest growth phase is completed, Amway Corporation will have 1.4 million square feet under roof at its headquarters, located on 300

acres along the Grand River. Amway employs more than 3,300 people in its world-wide operations.

Lions Clubs Sponsor Blood Drive

Lions Clubs are known for their outstanding records of service to their communities. In keeping with this tradition, the Alto and Lowell Lions Clubs are sponsoring a blood drive on Saturday, November 4th, at Alto Elementary School, 6510 Bancroft SE, in Alto.

This public blood drive is sponsored in cooperation with the Grand Valley Blood Program and will be held from 9:30 a.m. to 2:30 p.m.

Persons between the ages of 17 through 65 may give blood. Seventeen years olds must have written permission from their parents or a legal guardian. Donors must be in good health, weigh over 110 pounds, and are asked to eat a non-fatty meal within four hours of the time they donate.

In order to prevent needless waiting at the blood drawing, it is suggested that people call to make an appointment. Please call Norm Borgerson, 897-7904, or Tom Vaughn, 868-76654.



NEW ESTABLISHMENT

Lowell's newest establishment, Larkin's Saloon will open its doors for the first time on Saturday, pending Health Department approval. Formerly the Lowell Cafe, the interior has been gutted and completely remodeled. New owners are Harry, Steve and Bob Larkin, all brothers. The restaurant will serve dinners, sandwiches and your favorite beverages.

CLEAN-UP TIME

Get the grime rinsed off your vehicle and help Re-Float the Showboat at the same time. Now, where can you get a deal like that? At the Zephyr Station on Saturday, Oct. 28 between 9 a.m. and 3 p.m. The St. Mary's Youth Group will be doing all the work for The Cause.

DANCE SLATED

Moose Lodge #809, 201 Main St., will host Lowell's own "Country Pride" on Saturday, Oct. 28 for your dancing and listening pleasure. Members and guests are welcome. It is from 9:30 p.m. until 1:30 a.m.

SMILES

There are new grandparents on both ends of Main St. Howard and Evelyn West, Anderson Shoes, have a new granddaughter. George and Delores Dey, Dey Machine and Tool and That "Special" Place, have a new grandson.

A REMINDER

Motorists should be extra alert when darkness falls Tuesday, Oct. 31. Young ghosts and goblins will be out begging on Halloween night. Youngsters should wear costumes which are brightly colored or trimmed with fluorescent paint or tape so they can be seen. Parents should remind their trick or treaters against darting into the street, to look both ways and to cross at corners. Make this holiday a safe one in Lowell.

TIMES CHANGE

Are you ready for less daylight and early sundown? It is that time of year again to monkey with your clocks and hope you turned it the right way. We switch to Eastern Standard time at 2 a.m. on Sunday, Oct. 29. In autumn, we FALL BACK, as the dictum goes, so turn the clock back an hour as you go to bed Sunday and you'll be on time for work Monday.

LUCKY, LUCKY, UNLUCKY

Robert Harvey and A. J. Zengri, both of Lowell, could not believe their luck last week. While attending a convention of Moose members in Detroit with John Minges, Lowell, they split the cost of a \$1 chance on a major prize. Minges already had several tickets so he passed on getting in on just one last ticket. You guessed it. Harvey and Zengri split \$10,000.

CARS CRUNCHED

Involved in a property damage accident here was Barry Mosteller of Grand Rapids when he hit a parked car on North Hudson near Spring late Wednesday evening. In a separate incident, Thomas Engle of Belding turned left in front of David Harding, Lowell, on Monroe and Avery last Sunday evening.

SHORT SHOPLIFTER

An 11-year-old shoplifter was apprehended Wednesday afternoon by Lippert's employees and turned over to local police.

ADA MAN ARRESTED

Arrested for driving under the influence of intoxicating liquor Tuesday, Oct. 17, was Louis Pocs of Ada. Pocs was allegedly driving west on M-21 and struck a car that was east bound near Valley Vista trailer park. Pocs sustained minor injuries while the driver of the second vehicle, Debra Thomet of Lowell, was uninjured.

DO SOMETHING NICE — For Your Loved Ones. Have your portrait taken! Special limited offer—1 (8x10), 2 (5x7), and choice of 30 wallets or 25 portrait Christmas Cards—\$34.95. Modern Photographics, 897-5686, Lowell. c50

ROSIE DRIVE INN — 800 W. Main St., Lowell. This Week's Special: Roasted Sausages 82c. Tuesday night, Family Night, Burger Night; Wednesday Night, Chicken Night; Thursday Night, Liver & Onions; Saturday Night, A Delicious Stizler. c50

First Deer Is Brought To Ledger



Steve Marker, 23, of Hunt St. Lowell took this 6 point buck at 6:50 p.m. on October 19 north of the city near the state land. This is his second deer taken with bow and arrow in the eight years he's been hunting. He's shot six others over the years.

Bone Up For Nov. Election

Just 14 days left to bone up on the proposals and candidates on the ballot for Nov. 7 State General Election.

And bone up you should! It could take half an hour just to read the proposals and another half hour to make your decisions. That says nothing about a lengthy candidates ballot.

There are 11 proposals on the ballot with non-sequence letter designation (A, B, C, D, E, G, H, J, K, M and R). A complete copy of these proposals is in this issue as well as a simplified explanation of each. You'll find the views of the proponents and opponents included.

Probably the best way to spend the least amount of time in the voting booth is to clip the ballot from this issue, mark it with your choices and take it with you into the booth. Either that, or apply for an absentee ballot which can be filled out at home.

There will be election officials and several high school students at each polling place to assist voters before they enter the voting booth. On Nov. 2 a voting machine will be set up in each precinct between noon and 8 p.m. just the way they will appear on election day so that you can familiarize yourself with the system.

Lowell's two precincts are located at Runciman and Bushnell elementary schools. Your voter registration card tells you which is your precinct. Voting early in the day should help, too.

Next week the Ledger will publish the partisan and non-partisan ballots.

LIBRARY FALL HOURS

Monday 10:30-5:30
Tuesday 12:00-8:30
Friday 1:00-6:00
Saturday 10:00-5:30
Lowell Library

APPOINTMENTS — Not always needed at Vanity Hair Fashions, open six days, Lowell. 897-7506. c50

SCRATCH PADS — Assorted weights, colors, sizes . . . all are priced at a cheap, cheap, cheap 40 cents per pound. The Grand Valley Ledger, 105 N. Broadway, Lowell.

PRECISION & FASHION HAIR-STYLEING—For both men and women. Man's World Hairstyling. Phone 897-8102. c51f

Get Ready To Hunt Deer

A program for deer hunters will be held twice in early November by the Kent County Library System. It will be held Thursday, Nov. 9 at 7 p.m. in the Alto Library.

Robert Hess of the Department of Natural Resources will speak, and the film, "Please Pass the Venison," on how to butcher deer, will be shown. The discussion will include where to hunt, when to hunt and the rules of deer hunting.

There will be a book display on hunting and these books may be checked out after the programs.

The Alto Library is at 6050 Linfield; telephone, 868-6038.

State Police

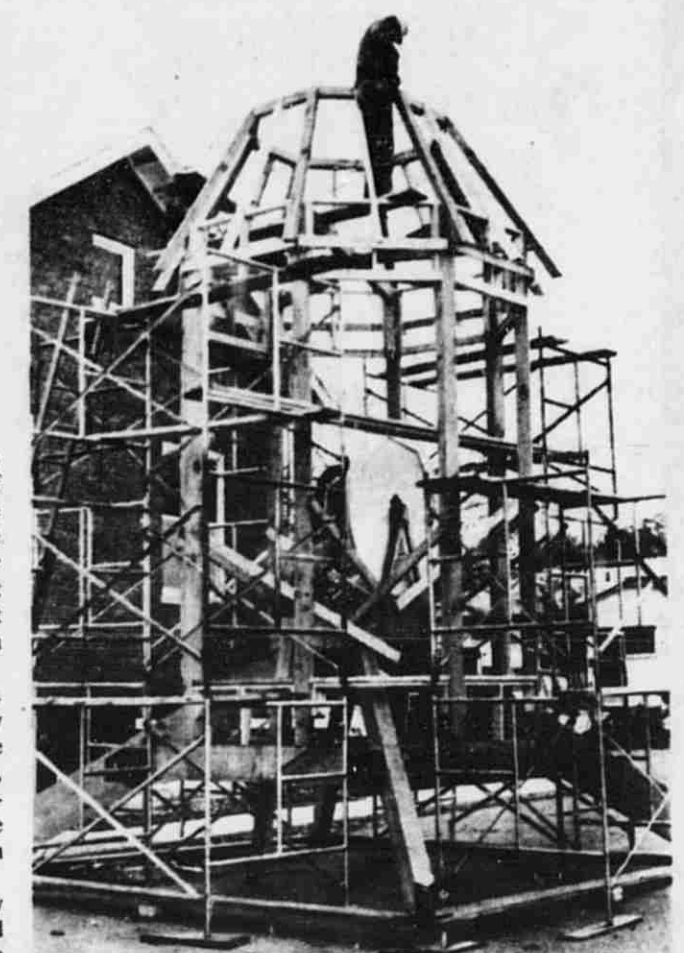
Auction Nov. 2

Mid-Michigan auction fans and those from other areas of the state are advised that the State Police are holding the second of two auctions this year on Thursday, November 2, at the National Guard armory at 2500 S. Washington Avenue in Lansing.

The sale will begin at 9 a.m. and continue through the day until all articles are sold. The State Police, for a second year, are having two auctions annually to expedite disposal of the items and to hold to a minimum the storage area needed.

The auction is authorized by law to dispose of confiscated and unclaimed articles whose owners could not be located, items lost or abandoned at state parks, and the personal effects of persons who died in state institutions without leaving heirs.

New Steeple For Methodist Church



Workmen hope to finish the bell tower for the Lowell United Methodist Church in the next two weeks. The steeple was lost in the August 19 storm. A new steeple is under construction and is slated for delivery Nov. 10 and will then be placed atop the bell tower, making the structure 104 feet tall.

FRI., OCT. 27 THRU MON., OCT. 30

STRAND Theatre

ONE SHOW EACH NIGHT AT 8 P.M.

Corvette Summer

Rated PG

Mark Hamill & Annie Potts. He's back from "Star Wars" with a girl you'll never forget.

MONDAY IS DOLLAR NIGHT

Lunch Menu . . .

LOWELL AREA SCHOOLS WEEK OF OCTOBER 30, 1978
 Mon., Oct. 30: Lasagne or Goulash, Fiesta Salad, French Bread, Fresh or Canned Fruit, Milk.
 Tues., Oct. 31: Barbecue on a Bun, Tossed Salad, Buttered Corn, Choice of Fruit or Whipped Jelly, Cookies or Bars, Milk.
 Wed., Nov. 1: Oven Fried Chicken with Rice or Fluffy Potatoes with Butter or Gravy, Green Beans, Biscuits or Dinner Rolls, Chilled Fruit, Milk.
 Thurs., Nov. 2: Tacos with Meat, Cheese, & Lettuce, Biscuits or Johnny Cakes with Syrup, Buttered Peas, Chilled Fruit Cup, Milk.
 Fri., Nov. 3: Red Arrow Submarine Sandwiches, Pickles and Potato Chips, Buttered Green or Wax Beans, Fruit and Cookies, Milk.

GRJC Will Get \$550,300

Grand Rapids Junior College will receive \$550,300 for major improvement to the campus buildings from the state. Gov. William G. Milliken has signed into law the capital outlay funding bill for junior and community colleges. The bill (HB 6027, I.E.) appropriates \$100,000 in planning funds and \$7,025,300 to continue and complete construction on various projects to junior and community colleges throughout the state.

SUBSCRIBE TO THE GRAND VALLEY LEDGER



Rough Winter Ahead

If the Farmers' Almanac, woolly bear caterpillars and thick-furred kitty cats are correct in their predictions, Michigan is in for a long, frigid winter.

The recent, cool temperatures seem to indicate there may be some truth to the forecast made by the Farmers' Almanac, which predicts much more cold and snow than normal this winter.

Meanwhile, the kitty cats, dogs and farm animals are putting on their winter coats somewhat thicker and earlier than usual, seeming to announce their agreement with the Almanac and the woolly bear caterpillar.

RE-FLOAT SNOWBOAT CLUB OF LOWELL

The Flat River Snowmobile Club is in charge of the fashion show on Sunday afternoon.

Door prize winners were Betty Fugitt, Bob Harvey, Polly Souser and Mike Roskamp.

MD Auction

The ninth annual auction for Muscular Dystrophy will be held on Wednesday, Nov. 1 at the Auction House, 7303 S. Division, starting at 7 p.m. Al Vanderlaan will be the auctioneer.

Merchants in the area have done new furniture, a microwave oven, radios, TV's, appliances, gift-certificates, as well as used items, such as a boat, motor and trailer, pottery, and TV's as well as antiques.

RE-FLOAT SNOWBOAT CLUB OF LOWELL
 by "Bucky"

Rent Best Seller

Books on the best seller lists are now available at the Lowell Public Library on a rental basis for 50¢ per week.

Still available at press time are: "Complete Book of Running" by James F. Fitz; "In Search of History" by Theodore H. White; "American Caesar" by William Manchester (on Douglas MacArthur's life); "The Empty Copper Sea" by John MacDonaid.

BEWITCHING BARGAINS

BEWITCHING BARGAINS
 Cash & Carry
 Rose Special \$7.50 Doz. Arranged in Vase \$10.00
 Carnation Special \$3.00 Arranged in Vase \$5.00
 Dry Art - Door Swags
 Lay Away Christmas
 20% Off put away before November 25th
 Open Six Days, Mon. - Sat. 9:00 A.M. - 6:00 P.M.

NATURE'S EMPORIUM
 611 West Main Street 897-7777

NOTICE "Going Crazy For Halloween"

NOTICE "Going Crazy For Halloween"
 Waitresses Will Be Appearing In Costume All Day Saturday . . .
 We Will Close Early At 8:00 P.M.
 For Employee's Hayride
 Remember . . . We're Open Sunday's 9 A.M. - 4 P.M.

Erb CASHWAY LUMBER GRAND OPENING!
 OCTOBER 26, 27 & 28
 5¢ HOT DOGS and POP
 FREE PRIZE DRAWINGS!
 SEVERAL PRIZES DRAWN NIGHTLY AT EACH LOCATION
 NO PURCHASE NECESSARY
 You Must Be 18 Years of Older to Enter

START AT THE TOP WITH HOME IMPROVEMENTS Standard Grade Whitewood 2x4 - 8' STUDS \$1.39 each 240# Bundle White Down \$5.99 240# Bundle All Colors \$6.39	ANDERSON WINDOW WALLS Diamond Like Cross Buck Door 3'x8'10" x 14" 30% OFF LIST \$149.95	PRE-HUNG INSULATED ENTRANCE DOOR Basic frame is pre-assembled BUILD IT YOURSELF IN 15 EASY STEPS 8'x8'x8' SPECIAL LUAN PRIN 1 1/2" x 8'x8' Hardwood \$7.97	PANELING GEORGIA PACIFIC 1st quality panels WALNUT WOOD \$2.97
TRUCKLOAD INSULATION SALE SPECIAL LUAN UNDERLAYMENT 1/2" - 4x8 \$6.95 Each 3 1/2" x 10' Roll \$9.25 88 Sq. Ft.	DRYWALL 3/8" - 4'x8' \$3.29 Each 1/2" - 4'x8' \$3.49 Each	7/16" - 4'x8' WATERWELD EXTERIOR SHEATHING \$7.57 Each	

ALL PRICES GOOD ONLY OCTOBER 26, 27 & 28

Erb CASHWAY LUMBER A YARD AHEAD OF THE REST!

GRANDVILLE 534-9675 3070 CORNER OF CHICAGO DRIVE & DIVISION SOUTHWEST
 LOWELL & 897-9291 925 WEST MAIN ST.

Obituaries

Veterans Pensions Restructured

POWELL - Bertha Powell, Hospital. She is survived by her children, Winnie and G. Snelcher, Evelyn Powell, Carmen and Edward Ford.

DEER HUNTING CONTEST

Season Opens November 15

Prizes - Remington 12 Ga. Doorstopper, Model 670
 2nd Prize - Savage Semi-Automatic 22, Model 80
 3rd Prize - Deer Antler Mounting Kit

PRIZES
 1st Prize - Remington 12 Ga. Doorstopper, Model 670
 2nd Prize - Savage Semi-Automatic 22, Model 80
 3rd Prize - Deer Antler Mounting Kit

Hunter's Orange - Hats, Gloves, Sweatshirts, Vests, Etc.

10% Off All Ammo During Season

Large Selection Of Hunting Knives

TRAPP'S SPORT SHOP
 8154 E. Fulton, Ada 676-5901
 OPEN SEVEN DAYS

MARSH - Maggie Marsh, aged 98, formerly of Lowell, passed away Thursday in Whitehall. She is survived by two daughters, Mrs. John (Lucy) Marsh of Northport, Fla. and Mrs. Margaret Arthur of Canyon, Colorado; 13 grandchildren; ten great-grandchildren; also one nephew.

NIMMO - Mrs. Lemoine Nimmo, aged 92, passed away Friday morning, October 13, in Kent Community Hospital. She is survived by her daughters, Mrs. Jean Boynton, Mrs. Clyde (Marva) Sanborn, and Mrs. George (Betty) Everse all of Grand Rapids. Also surviving are four grandsons, W. Jack Sanborn of Lowell, Robert, Timm and Gregg Sanborn all of Grand Rapids.

MAITCE - Miss Grace G. Maitce, aged 70, died unexpectedly at the residence, 1815 Silver SE, Wednesday evening, October 18, 1978.

TOBIAS - Mildred M. Tobias, aged 81, born in Williamson, MI, July 30, 1897, of 1155-60th St., Alto, passed away Sunday at Blodgett Memorial Hospital.

HIGGINS - Glen Higgins, 72, passed away Wednesday evening at St. Joseph Mercy Hospital in Ann Arbor.

LENARTZ - Wayne C. Lenartz, aged 41, of 8011-68th Street SE, Alto, MI, passed away unexpectedly Sunday afternoon in Grand.

The non-service connected Veterans pension program has been restructured by a bill (H.R. 1072) passed during Congress final flurry and sent to the President.

Congressman Hal Sawyer, a member of the House Veterans Affairs Committee where the legislation was developed, said it was the first major change in the program since 1959. It is still, however, based on financial need.

Although maximum pension rates will be increased substantially if the President signs the bill into law, (up to \$3,550 annually for a single veteran, an increase of \$1,186 above the present rate), the overall cost has been moderated by re-defining eligibility standards for pensions. Nearly all the veterans' family income will be considered in arriving at his yearly income. Under present law, only the kinds of income are excluded.

The new system indexes pension rates to the Consumer Price Index on the same basis as Social Security. It will provide automatic pension increases to keep pace with the cost-of-living and ensure that VA pensions will not be reduced solely because of Social Security increases. It raises the support level for veterans receiving pensions well above the support level.

Congressman Sawyer called it an "historic measure" that "recognizes the needs of veterans and their dependents in this contemporary society." Sawyer said inequities and deficiencies in the old program had become obvious and efforts to improve it began in 1973.

"Hearings established that a thorough restructuring of the pension program was required. The Committee proceeded deliberately and cautiously, taking testimony from the Veterans Administration, veterans organizations and numerous individuals. I believe we have come up with a program that will stand the test of time," he said.

World War I and Mexican Border War veterans will receive special consideration in the preparation of a comprehensive example tax return.

The university charges a nominal enrollment fee, \$24, to cover the cost of printed text materials for each person attending, coffee, commercial space, postage and administrative expenses.

Other maximum annual rates in the new bill: Veteran with one dependent, \$4,651; each additional child, \$600; veteran in need of aid and attendance, \$5,680; same veteran with one dependent, \$6,781; surviving spouse of veteran, \$2,379; same spouse with one child, \$3,116.

TAX INSTITUTE SCHEDULED FOR GRAND RAPIDS

Grand Rapids is one of eleven cities selected as a site for a Federal/State income tax institute for tax practitioners and commercial tax return preparers. The series of institutes is sponsored by the University of Michigan.

Specialists from the Internal Revenue Service and the Michigan Department of Treasury will teach the two-day program. The Grand Rapids program will be held at the Hospitality Motor Inn, November 13 and 14.

Persons interested in obtaining enrollment information should contact the University of Michigan Extension Service at 313-768-5304, or write: Income Tax, University of Michigan Extension Service, Conferences

Handiwork For Christmas

A "Counted Threads Workshop" conducted by the Embroiderers' Guild of America will be held at the Lowell Library on Wednesday, Nov. 1, at 1:30 p.m.

Counted threads is a type of embroidery where patterns are worked directly onto linen material by counting the threads and following a chart given on squared paper. The emphasis for this workshop will be on making items for the Christmas season. A kit will be available for those who would like to try this needlework. The cost of the kit, with refreshments, is \$1.

Reservations for this program are necessary by calling the library at 897-9556.

There will be an exhibit of counted thread work at the library in an especially designed case for showing the needlework of the East Grand Rapids Chapter of the Embroiderers' Guild of America. There also will be a display of books on needlework available through the 17 member libraries of the Kent County Library System.

The Lowell Library, a part of the Kent County Library System, is at 325 W. Main Street, Lowell.

BE A LEDGER SUBSCRIBER CALL 897-9261

EDWARD L. "ED" BENJAMIN
 RESIDENTIAL AND NEW LADD BUILT HOMES . . .
 Specializing in "Eastgate" Real Estate
 Phone 456-9561

HAL SAWYER WORKS AT BEING YOUR CONGRESSMAN

He lives an eight-minute walk from Capitol Hill, averages fourteen hours per day working in your interests. Hal consistently fights inflationary bills and the trend to ever-bigger government. He knows taxes are killing you and battles for a rollback. In just two years, Hal Sawyer has won the unreserved respect of his peers and gratitude of his constituents. Let's keep him on the job November 7.

THANK YOU, CONGRESSMAN SAWYER . . .

- ... for the \$500 for the Close-Up Program. I was very astonished that you came to our school.
- ... for your interest and support of the elderly of Kent County.
- ... for your concern and help in our request for a V.A. loan to purchase a house.
- ... for your initiative in introducing such a vitally important piece of legislation calling for a balanced budget.
- ... for assisting us when our son was injured in Korea.
- ... for interceding on our behalf through the I.C.C. (NOTE: All excerpts are from letters on file in Congressman Sawyer's Washington office.)

SAVING IS WISE BUT . . . Investing Your Savings In

***Certificates Of Deposit Is Even Wiser**

Certificates Of Deposit Will Earn The Highest Interest Return For Your Dollars.

MINIMUM DEPOSIT	TIME	YIELD
\$1,000	1 Year	6 Percent
\$1,000	30 Months	6 1/2 Percent
\$1,000	4 Years	7 1/4 Percent
\$1,000	6 Years	7 1/2 Percent

All Interest Is Compounded Quarterly

The Friendly People At The State Savings Bank Will Be Happy To Help You Learn More About Certificates Of Deposit And How They Will Earn For You

LOWELL - ROCKFORD

MAIN OFFICE	ROCKFORD OFFICE
LOBBY HOURS	ROCKFORD OFFICE HOURS
Mon., Tues. and Wed. 9:30 - 2:00	Monday thro Thursday 9:30 - 2:00
Thurs. and Sat. 9:30 - Noon	Friday 9:30 - 1:30
Friday 9:30 - 1:30	Saturday 9:30 - 1:30

* Federal Law Requires Substantial Penalty For Early Withdrawal

HAL SAWYER WORKS AT BEING YOUR CONGRESSMAN

He lives an eight-minute walk from Capitol Hill, averages fourteen hours per day working in your interests. Hal consistently fights inflationary bills and the trend to ever-bigger government. He knows taxes are killing you and battles for a rollback. In just two years, Hal Sawyer has won the unreserved respect of his peers and gratitude of his constituents. Let's keep him on the job November 7.

GENERAL ELECTION

To the Qualified Electors:

NOTICE IS HEREBY GIVEN, That a General Election will be held in the CITY OF LOWELL

County of Kent, State of Michigan

ON

TUESDAY, NOVEMBER 7, 1978

AT THE PLACE OR PLACES OF HOLDING THE ELECTION IN SAID CITY AS INDICATED BELOW, VIZ:

PRECINCT NO. 1, Runciman School
300 High St.

PRECINCT NO. 2, Bushnell School
700 Elizabeth St.

FOR THE PURPOSE OF ELECTING THE FOLLOWING OFFICERS, VIZ:

STATE Governor & Lieutenant Governor, Secretary of State, Attorney General, 2 Members of State Board of Education, 2 Members of Board of Regents of the University of Michigan, 2 Members of Michigan State University Board of Trustees, 2 Members of Wayne State University Board of Governors.

CONGRESSIONAL LEGISLATIVE COUNTY United States Senator, Representative in Congress. State Senator, State Representative County Commissioner

AND ALSO ANY ADDITIONAL OFFICERS THAT MAY BE ON THE BALLOT

AND ALSO TO VOTE ON THE FOLLOWING NON-PARTISAN OFFICERS, VIZ: Two Justices of the Supreme Court, Judge of the Court of Appeals, Judges of the Circuit Court, Judges of the District Court.

AND ALSO TO VOTE ON THE FOLLOWING STATE PROPOSALS:

- A. Proposal relating to holding of constitutional convention.
B. Initiation of legislation proposing to require a person sentenced for a crime of violence to serve minimum term.
C. Proposal relating to deposit of state funds in Savings and Loan Associations and Credit Unions as well as banks.
D. Proposal relating to raising the drinking age to 21.
E. Proposal relating to limit of taxes and spending.
G. Proposal relating to allowing state troopers collective bargaining rights.
H. Proposal relating to prohibition of property tax for financing education.
J. Proposal relating to reducing and limiting property tax assessments and equalization and limiting state income tax.
K. Proposal relating to allow refusal of bail to persons charged with crime of violence if 2 previous convictions in 15 year period.
M. Proposal relating to creating and funding state transportation authority.
R. Proposal relating to creating Railroad Redevelopment Authority authorized to issue bonds and pledge full faith and credit of state.

THE POLLS of said election will be open at 7 o'clock a. m. and will remain open until 8 o'clock p. m. of said day of election.

Ray E. Quada City Clerk

Legal Notices...

FAMILY LAW CENTER 1201 McKay Tower, Grand Rapids, MI 49503
ORDER FOR PUBLICATION & TO APPEAR AND ANSWER
STATE OF MICHIGAN IN THE CIRCUIT COURT FOR THE COUNTY OF KENT

Plaintiff, VS. FLOYD RICARDO CARMOUCHE
Defendant.
At a session of said Court held in the Hall of Justice, City of Grand Rapids, Michigan, on this 23rd day of August, 1978.

On this 7th day of September, 1978, an action for divorce was filed by the above named Plaintiff against the above named Defendant, in the Circuit Court for the County of Kent.

IT IS HEREBY ORDERED that you, the Defendant, whose last known address was 831 Jolin, SE, Grand Rapids, Michigan, shall answer or take such other action as may be permitted by law on or before the 7th day of December, 1978.

STUART HOFFIUS, Circuit Court Judge
Examined, Countersigned and Entered: JAMES L. DYKEMA, Deputy Clerk.

ATTEST: A TRUE COPY. JAMES L. DYKEMA, Deputy Clerk. 10/11-11/1

FAMILY LAW CENTER 1201 McKay Tower, Grand Rapids, MI 49503
ORDER FOR PUBLICATION & TO APPEAR AND ANSWER
STATE OF MICHIGAN IN THE CIRCUIT COURT FOR THE COUNTY OF KENT

Plaintiff, VS. JIMMIE EUGENE STAFFORD, SSN: Unknown
Defendant.
At a session of said Court held in the Hall of Justice, City of Grand Rapids, Michigan, on this 23rd day of August, 1978.

On this 23rd day of August, 1978, an action for divorce was filed by the above named Plaintiff against the above named Defendant, in the Circuit Court for the County of Kent.

IT IS HEREBY ORDERED that you, the Defendant, whose last known address was 108 West Odell, Austin, Texas 78752, shall answer or take such other action as may be permitted by law on or before the 23rd day of November, 1978.

STUART HOFFIUS, Circuit Court Judge
Examined, Countersigned and Entered: BONNIE K. ULANCH, Deputy Clerk.

ATTEST: A TRUE COPY. BONNIE K. ULANCH, Deputy Clerk. 10/4-10/25

FAMILY LAW CENTER 1201 McKay Tower, Grand Rapids, MI 49503
ORDER FOR PUBLICATION & TO APPEAR AND ANSWER
STATE OF MICHIGAN IN THE CIRCUIT COURT FOR THE COUNTY OF KENT

Plaintiff, VS. DALE VERNON HITS SSN: 384-42-1559
Defendant.
At a session of said Court held in the Hall of Justice, City of Grand Rapids, Michigan, on this 6th day of September, 1978.

On this 6th day of May, 1978, an action for divorce was filed by the above named Plaintiff against the above named Defendant, in the Circuit Court for the County of Kent.

IT IS HEREBY ORDERED that you, the Defendant, whose last known address was 1513 College, N.E., Grand Rapids, Michigan, shall answer or take such other action as may be permitted by law on or before the 5th day of December, 1978.

GEORGE R. COOK, Circuit Court Judge
Examined, Countersigned and Entered: ELIZABETH SCHLOSSER, Deputy Clerk.

ATTEST: A TRUE COPY. ELIZABETH SCHLOSSER, Deputy Clerk. 10/4-10/25

SOLICITATION FOR BIDS
The Kent County Purchasing Department is soliciting bids for the items listed below. Detailed specifications are available at the Purchasing Office, 300 Homer Street, Grand Rapids, Michigan 49502.

STATE OF MICHIGAN
The Probate Court for the County of Kent
JUVENILE DIVISION
Notice is hereby given that a hearing will be held in the Juvenile Court of the County of Kent, Michigan, in the matter of, on the date and time and on petition by petitioner shown below alleging that said children are neglected, delinquent or in need of care within the provisions of the Juvenile Code.

★ Subscribe to the Ledger ★

NOTICE To The Residents Of The City Of Lowell Leaf Burning

Last burning will be permitted in the City of Lowell between October 26, 1978 and November 12, 1978, subject to the following:

- 1. No leaves will be burned after 3 p.m. on October 26st. (Halloween).
2. Leaves must not be burned in the street or on any City-owned, paved surface.
3. Fires must be attended by a responsible adult at all times.

Police officers or members of the Volunteer Fire Department shall have the right to extinguish any fire which in their judgment may be hazardous to others. Burn away from all buildings and be safe. Ray Quada, City Manager

City Of Lowell Oakwood Cemetery FALL CLEAN-UP November 1 - 3
Fall clean-up time at Oakwood Cemetery in Lowell, will be Nov. 1-3, 1978. During this week all artificial flowers, arrangements, etc., will be removed and disposed of.

HERBED VEGETABLE SALAD
3 cups ripe tomato chunks
2 cups thinly sliced unpeeled cucumber
1 cup thinly sliced carrots
1/2 cup white vinegar
1/8 cup water
2 tablespoons sugar
2 tablespoons onion flakes
1 teaspoon basil leaves, crushed
3/4 teaspoon salt
1/2 teaspoon ground celery seed
1/8 teaspoon ground black pepper

In a medium bowl combine tomatoes, cucumber and carrots. In a small bowl combine vinegar, sugar, onion flakes, basil, salt, celery seed and black pepper; stir well. Let stand for 10 minutes. Pour over vegetables; toss to coat well. Cover and refrigerate 2 to 3 hours, turning vegetables occasionally. Yield: About 3 cups; 5 to 6 portions.

Ionia Co. Plat Books On Sale

Ionia County 4-H Advisory Council members are selling Ionia County Plat Books. These plat books are the main source of income for the council. Proceeds from the sale go to the various program needs of Ionia County 4-H.

Accident

Dwight A. Higgins, 18, of Saranac, told Ionia City police he was westbound on M-21, east of Harter Street when he observed a car, driven by John W. Glasson, 75, of Ionia, stopped and waiting to make a left turn about 3 p.m. Wednesday.

S.J. Stemm Dies At 76

Samuel J. Stemm, 76, of 1425 Morton, Lake Odessa, died Friday, Oct. 20, at Provincial House in Hastings where he was patient.

He was born March 26, 1902 in Edmore, the son of John and Mary Sharp Stemm and attended school in Montcalm County, Mich. Mr. Stemm started working for the C&O Railroad when he was 17 years old and retired in 1967.

Kelly Weeks

A Winner

This summer, Michigan State University hosted the state level 4-H Share-the-Fun evaluations and nine area 4-H'ers were awarded blue ribbons or honorable mention. Kelly Weeks of Saranac won honorable mention for the baton twirling routine she performed with Becky Simons of Ionia.

SARANAC COMMUNITY CHURCH (United Church of Christ) 125 Bridge St., Saranac, MI
DIAL-A-PRAYER - 642-9659
Morning Worship 10:00 a.m.
Sunday School 11:15 a.m.
THE REV. EDWIN MENDENHALL 642-6322

GALILEE BAPTIST CHURCH OF SARANAC
Corner of Orchard & Pleasant
Sunday School 10:00 a.m.
Morning Worship 11:00 a.m.
Evening Worship 7:00 p.m.
Young Peoples' Afterglow 8:30 p.m.
Tuesday - AWANA 6:30 p.m.
Wednesday - Prayer Meeting 7:30 p.m.
REV. JAMES R. FRANK 642-9174 - 642-9274 (Nursery & Children's Churches)

Saranac Doin's... Contract Ratified, Bond Issue Set By School Board

Saranac Community Schools' Board of Education finally ratified a contract with Saranac Education Association (SEA) last Thursday evening after months of negotiations.

Superintendent Earl Cady said that while there were some changes in contract language, major provisions of the contract were to increase teacher salaries by 3.75 percent.

That raises the teachers' degree base salary to \$10,750 with the same increase along the line on the salary schedule, Cady said.

The bond resolution passed unanimously by the board for \$4,475,000 to replace the Saranac middle school with a new building, make alterations to the elementary school and additions to the high school if voters approve on Dec. 9.

In accordance with guidelines from the Michigan Department of Education, the price of hot lunches was raised from 75 cents per meal to 85 cents.

Another major change in the contract was the upgrading in health insurance from Super-Med to Super-Med II, an increase from about \$87 a month to full family coverage to about \$105 per month for the same coverage.

Investigation is continuing into the breaking and entering of a Saranac residence. Lawrence Davies of Lansing told deputies entry to the home had been gained through a north window. Taken from the home, officers said, were a color TV and AM-FM radio.

IDS Serving the needs of millions of Americans since 1949.
EVERY 60 SECONDS ANOTHER AMERICAN IS DIAGNOSED AS DIABETIC. More than 10 million Americans have diabetes today. The Kent County Unit of the American Diabetes Association needs your support for its November 27-through December 6 Residential Awareness Campaign.

The Quickest Way To Run Out Of Gas Is To Use Electricity To Preserve Gas USE GAS L.P. GAS
Norgas Bulk and Cylinder Installation Budget Payment Plan
WE CARRY A COMPLETE LINE OF:
Handicapped Ranges
Engine Heaters
New Electric Gas Grills
HEATING COOLING INSULATION
13312 E. Fulton Ave., Lowell 977-9368
INSTALLATION

Smoke Alarm-- Fire's Early Warning Signal
In a single level home (bottom), a smoke detector (cross) should be located outside the sleeping area. A smoke detector should be provided to protect each sleeping area in multi-level homes (top) or homes where the sleeping areas are separated. In addition, a detector should be placed at the head of the basement stairs.

WATCH YOUR SPEED! For Your Safety The Village Of Saranac Is Now Radar Controlled
When smoke is sensed, a UL Listed smoke detector will emit a loud audible alarm. The alarm becomes of increased importance when it is realized that a significant percentage of residential fire victims are asleep when fires originate.

BUSINESS DIRECTORY

CASCADE HILLS SHELL 4019 Cascade Rd. S.E. Grand Rapids
ROAD SERVICE - Pick-up & Delivery
Minor Repairs - Tune-ups - Pipes Brakes - Mufflers
SHADY ACRES FARM
Wedding Receptions
Choice of Menu (home cooked)
May Hides
Banquets
OLIVE'S SPORT & BAIT 75 Bridge St., Saranac, 642-0443
UNIVERSAL & NEW HOME SEWING MACHINE HEADS
Cabinets & Portable Cases in Stock
SEWING NOTIONS
Thread, Pins, Laces, Buttons, Material, Patterns, Etc.
THOMPSON INTERIOR SERVICE
CARPETING WALLPAPER
LINOLEUM COUNTER TOPS
9228 Freeport Ave. Phone 765-5157
HOURS: 9-5 Thur. & Fri. - Sat. 9-3

The Back Page...

Masks Could Be Dangerous

Halloween masks can be a hazard, warns the Michigan Optometric Association.

According to Dr. James M. Flynn, president of the organization, masks can slip out of place or have such small eye holes that they block a child's view of approaching cars, objects on the ground, steps, curbs and holes in lawns or streets.

"A safe alternative to masks is to use non-allergic makeup to disguise your child for Halloween fun," Dr. Flynn said. He added that the makeup should be applied by an adult to avoid accidents with makeup applicators.

Some simple costume decorating tricks can help protect

children from accidental injury by making them safety visible to drivers. Adding retro-reflective material to a costume is the easiest and best way to increase its visibility to safe levels. According to optometric studies, the material makes pedestrians safely visible to drivers traveling even at the excessive speeds of 70 and 80 m.p.h.

The retro-reflective material can be purchased in iron-on, sew-on and stick-on varieties in most hardware and department stores. It should be applied to the front, sides and back of the costume.

SUBSCRIBE TO THE GRAND VALLEY LEDGER

These Pumpkins Are Heavy, Man!



Matt, Jon, Phillip and Leah Ritchie have plans for a BIG Halloween. The pumpkins grown by their folks, Tom and Torie Ritchie, 3370 Alden Nash, Lowell, weigh in at 86 and 90 pounds.

UFO EXPERIENCE CONTINUES IN CHAFFEE PLANETARIUM

There's still time to see the popular sky show, "The UFO Experience," which will continue in the Roger B. Chaffee Planetarium of the Grand Rapids Public Museum through Sunday, November 26. It delves into the mystery surrounding all the UFO sightings and the plausibility of their being spacecrafts from another world.

Following the Thursday and Saturday evening shows, a fifteen minute introduction to the

stars, constellations and planets currently visible in the night skies, will be given without additional charge.

Sky shows are presented Thursday, Friday and Saturday at 8 p.m.; and Saturday and Sunday afternoons at 2:30 and 3:45. Admission is \$1 for adults and 75c for students. Special shows for groups of 35 or more can be arranged by calling 456-3985 Monday through Friday between 10 a.m. and 5 p.m.

Making Houses Affordable

The American dream of owning a home is, unfortunately, becoming an impossible dream for many families. In a report to Congress, the Comptroller General of the U.S. stated that as a result of current market conditions, many young, middle-income families cannot afford a new house. Since the prices of existing single-family houses are closely related to the prices of new houses, first-time buyers have similar affordability problems with existing houses.

Houses are increasingly less affordable because new house prices have risen at a faster rate than median family income. Home ownership costs have also risen, according to the Comptroller General,—about 200 percent since 1965. These ownership costs represent payments on mortgage principal and interest, insurance premiums, property tax, utilities and repair and maintenance expenses.

Today's home buyers are families in upper or upper-middle income brackets with two incomes, and/or are prior homeowners able to use the equity

from their existing homes to buy higher priced new homes. This differs sharply from the 1950's and 1960's when new home buyers generally were families with one income buying their first home.

Another factor influencing the rising prices of new houses are regulations that control the development of land and the construction of houses. However, no consistent pattern exists across the country. Instead, the impact varies among communities because of a wide variety of requirements.

But some progress is being made. Congress enacted the Housing and Community Development Act of 1977 under which the percentage of the house price required for down payment was reduced for federally insured mortgages. Also this program enables younger families to make lower monthly payments during the early years of home ownership, with monthly payments increasing as earning power expands.

Puppets Due At Library

Two puppet shows will take their theme from the World Affairs Council's International Month with emphasis on Australia. They will be presented by the Kent County Library System children's services department for children ages four through eight.

The stories for the plays are taken from the children's books, "Koala Bear's Walkabout" by Anita Hewett and "Katy No-Pocket" by Emmy Payne. The books have been adapted by Gail DeYoung, assistant children's services coordinator.

The puppet schedule locally is: Thursday, Nov. 2, Alto Library at 11 a.m.; Monday,

Nov. 13, Lowell Library at 10:30 a.m.; Wednesday, Nov. 15, Cascade Christian Church for Cascade Library at 10 a.m.

Cleaning and Fixing Ideas

• When washing large items — sheets and tablecloths — try to balance the load with small items such as pillowcases and towels. Mixed loads make for better handling in both the washer and dryer.

• When pet "accidents" occur, mix a teaspoon of detergent and a teaspoon of white vinegar in a quart of warm water. Apply the mixture after sponging the area with lukewarm water several times, then dry and brush the pile gently.

ABORIGINE ART AT PUBLIC MUSEUM

There are only a few more days in which to see the outstanding Australian Aborigine Art exhibit featured in the Grand Rapids Public Museum. The exhibit will close at 5 p.m. Sunday, November 5.

The exhibit has previously been seen in Albuquerque, New Mexico; Ames, Iowa; Denver, Colorado; Washington, D.C.; Seattle, Washington; and Edmonton, Canada. It has received excellent reviews everywhere. Nancy Polster, Ames

Daily Tribune reviewer, wrote, "Rush, don't walk to see the 'Art of the First Australians,' it is superb in every detail." Artists or designers of fabrics and interiors who are always in search of new ideas, will find inspiration in the unique designs on display.

Viewing hours at the Museum are from 10 a.m. to 5 p.m. Monday through Friday, and from 1 to 5 p.m. Saturdays, Sundays and holidays. Admission is free.

"I do not believe also in the abolition of free inquiry or that the ideas represented by 'freedom of thought,' 'freedom of press' and 'free assembly' are just rhetorical myths. I believe rather that they are among the most valuable realities that men have gained, and that if they are destroyed men will again fight to have them."

Thomas Wolfe, Author

Protect Your Highway Dollars

Vote **YES** on Proposition

M

—Nov. 7—

Paid for by the Michigan Trucking Association
501 S. Capitol Ave., Lansing, Michigan 48933

BOO-T-FUL BUYS

FLANNEL SHIRTS!

Men's Sizes	Boy's Sizes
— S-M-L-XL	8-18
\$13⁰⁰	\$8⁰⁰

Great With Jeans!

Member Lowell Area Chamber of Commerce

THAT SPECIAL PLACE

215 W. Main, Lowell, 897-8545

PASS ON THE SAVINGS SALE

OCTOBER 17-31

14 BIG DAYS!

Standard Lumber's

STANDARD LUMBER IS "BLITZING" ALL THE COMPETITION...

AND PASSING THE SAVINGS ON TO YOU!

<h3>PANELING SPECTACULAR!</h3> <p>4' x 8' Real Wood Panels</p> <table style="font-size: 0.8em;"> <tr><td>Lite</td><td>only \$8⁹⁵</td></tr> <tr><td>Eim</td><td>only \$8⁹⁵</td></tr> <tr><td>Serenity</td><td>only \$8⁹⁵</td></tr> <tr><td>Birch</td><td>only \$8⁹⁵</td></tr> <tr><td>Kansas</td><td>only \$11²⁰</td></tr> <tr><td>Oak</td><td>only \$11²⁰</td></tr> <tr><td>Mediterranean</td><td>only \$13⁹⁵</td></tr> <tr><td>Cedar</td><td>only \$13⁹⁵</td></tr> <tr><td>Buckskin</td><td>only \$13⁹⁵</td></tr> <tr><td>Cedar</td><td>only \$13⁹⁵</td></tr> <tr><td>Jamestown</td><td>only \$14⁶⁶</td></tr> <tr><td>Hickory</td><td>only \$14⁶⁶</td></tr> </table> <p>4' x 8' Woodgrain Prints on Plywood</p> <table style="font-size: 0.8em;"> <tr><td>Golden</td><td>only \$5⁸⁹</td></tr> <tr><td>Surfer</td><td>only \$5⁸⁹</td></tr> <tr><td>Mist</td><td>only \$5⁸⁹</td></tr> <tr><td>Surfer</td><td>only \$5⁸⁹</td></tr> <tr><td>Maple</td><td>only \$6¹⁴</td></tr> <tr><td>City</td><td>only \$6¹⁴</td></tr> <tr><td>Pineview</td><td>only \$6¹⁹</td></tr> <tr><td>High Noon</td><td>only \$6¹⁹</td></tr> <tr><td>Klamath</td><td>only \$6³⁴</td></tr> <tr><td>Cedar</td><td>only \$6³⁴</td></tr> <tr><td>Copper Hill</td><td>only \$7⁴¹</td></tr> <tr><td>Hickory</td><td>only \$7⁴¹</td></tr> <tr><td>Early Spring</td><td>only \$7⁴¹</td></tr> <tr><td>Fawn</td><td>only \$7⁴¹</td></tr> </table> <p>4' x 8' Hardboard Panels</p> <table style="font-size: 0.8em;"> <tr><td>Abitibi</td><td>only \$11¹⁸</td></tr> <tr><td>Windworn</td><td>only \$11¹⁸</td></tr> <tr><td>Cedar Mill</td><td>only \$5⁷⁵</td></tr> <tr><td>Brown</td><td>only \$5⁷⁵</td></tr> <tr><td>Masonite</td><td>only \$13¹⁶</td></tr> <tr><td>White Brick</td><td>only \$13¹⁶</td></tr> <tr><td>Masonite</td><td>only \$13¹⁶</td></tr> <tr><td>Red Brick</td><td>only \$13¹⁶</td></tr> <tr><td>Masonite</td><td>only \$13¹⁶</td></tr> <tr><td>Tan Brick</td><td>only \$13¹⁶</td></tr> </table> <p>ALL OTHER PANELING 10% OFF</p>	Lite	only \$8 ⁹⁵	Eim	only \$8 ⁹⁵	Serenity	only \$8 ⁹⁵	Birch	only \$8 ⁹⁵	Kansas	only \$11 ²⁰	Oak	only \$11 ²⁰	Mediterranean	only \$13 ⁹⁵	Cedar	only \$13 ⁹⁵	Buckskin	only \$13 ⁹⁵	Cedar	only \$13 ⁹⁵	Jamestown	only \$14 ⁶⁶	Hickory	only \$14 ⁶⁶	Golden	only \$5 ⁸⁹	Surfer	only \$5 ⁸⁹	Mist	only \$5 ⁸⁹	Surfer	only \$5 ⁸⁹	Maple	only \$6 ¹⁴	City	only \$6 ¹⁴	Pineview	only \$6 ¹⁹	High Noon	only \$6 ¹⁹	Klamath	only \$6 ³⁴	Cedar	only \$6 ³⁴	Copper Hill	only \$7 ⁴¹	Hickory	only \$7 ⁴¹	Early Spring	only \$7 ⁴¹	Fawn	only \$7 ⁴¹	Abitibi	only \$11 ¹⁸	Windworn	only \$11 ¹⁸	Cedar Mill	only \$5 ⁷⁵	Brown	only \$5 ⁷⁵	Masonite	only \$13 ¹⁶	White Brick	only \$13 ¹⁶	Masonite	only \$13 ¹⁶	Red Brick	only \$13 ¹⁶	Masonite	only \$13 ¹⁶	Tan Brick	only \$13 ¹⁶	<h3>PANEL MOULDINGS</h3> <p>ALL "UNIVERSAL" PANEL MOULDINGS</p> <p>only 79¢</p> <hr/> <h3>PANELING ADHESIVE</h3> <p>SpeeDee Tite-Grip</p> <p>only 69¢</p> <p>When purchased with sale ad paneling.</p> <hr/> <h3>DIMENSION LUMBER</h3> <p>2 x 4 Std. & Btr. SPF.</p> <table style="font-size: 0.8em;"> <tr><td>PRE CUTS</td><td>only \$1⁴⁵</td></tr> <tr><td>12'</td><td>only \$2¹⁶</td></tr> <tr><td>10'</td><td>only \$1⁸⁰</td></tr> <tr><td>14'</td><td>only \$2⁵²</td></tr> <tr><td>16'</td><td>only \$2⁸⁸</td></tr> </table> <p>2 x 6 Utility SPF.</p> <table style="font-size: 0.8em;"> <tr><td>8'</td><td>only \$2⁰⁸</td></tr> <tr><td>10'</td><td>only \$2⁶⁰</td></tr> <tr><td>12'</td><td>only \$3¹²</td></tr> <tr><td>14'</td><td>only \$3⁶⁴</td></tr> <tr><td>16'</td><td>only \$4¹⁶</td></tr> </table> <p>2 x 10 Std. & Btr. SPF.</p> <table style="font-size: 0.8em;"> <tr><td>8'</td><td>only \$4⁵⁶</td></tr> <tr><td>10'</td><td>only \$5⁷⁰</td></tr> <tr><td>12'</td><td>only \$6⁸⁴</td></tr> <tr><td>14'</td><td>only \$7⁹⁸</td></tr> <tr><td>16'</td><td>only \$9¹²</td></tr> <tr><td>18'</td><td>only \$10²⁶</td></tr> <tr><td>20'</td><td>only \$11⁴⁰</td></tr> </table>	PRE CUTS	only \$1 ⁴⁵	12'	only \$2 ¹⁶	10'	only \$1 ⁸⁰	14'	only \$2 ⁵²	16'	only \$2 ⁸⁸	8'	only \$2 ⁰⁸	10'	only \$2 ⁶⁰	12'	only \$3 ¹²	14'	only \$3 ⁶⁴	16'	only \$4 ¹⁶	8'	only \$4 ⁵⁶	10'	only \$5 ⁷⁰	12'	only \$6 ⁸⁴	14'	only \$7 ⁹⁸	16'	only \$9 ¹²	18'	only \$10 ²⁶	20'	only \$11 ⁴⁰	<h3>JONSEREDS CHAIN SAWS</h3> <table style="font-size: 0.8em;"> <tr><td>#381</td><td>2.1 Cubic Inch 1.8 Horsepower 14" WSH Bar</td><td>only \$125⁹⁵</td></tr> <tr><td>#49SP</td><td>3 Cubic Inch 3 Horsepower 16" WSH Bar</td><td>only \$265⁴⁵</td></tr> <tr><td>#52E</td><td>3 Cubic Inch 3.2 Horsepower 18" WSH Bar</td><td>only \$314⁹⁵</td></tr> <tr><td>#70E</td><td>4.2 Cubic Inch 4.4 Horsepower 20" WSH Bar</td><td>only \$386⁹⁵</td></tr> </table> <p>E = Electronic Ignition Optional Chainbrake Available</p>	#381	2.1 Cubic Inch 1.8 Horsepower 14" WSH Bar	only \$125 ⁹⁵	#49SP	3 Cubic Inch 3 Horsepower 16" WSH Bar	only \$265 ⁴⁵	#52E	3 Cubic Inch 3.2 Horsepower 18" WSH Bar	only \$314 ⁹⁵	#70E	4.2 Cubic Inch 4.4 Horsepower 20" WSH Bar	only \$386 ⁹⁵	<h3>CLAW HAMMER</h3> <p>By Easco. 16 oz. head.</p> <p>\$129</p> <p>(not exactly as pictured)</p>	<h3>DISSTON HAND SAW</h3> <p>Hardened, tempered 26" blade is set and filed. Handled bonded tightly to blade.</p> <p>\$249</p>	<h3>4x8 AUTUMN OAK PANELING</h3> <p>(Simulated wood grain on particle board)</p> <p>\$2⁹⁹</p>
Lite	only \$8 ⁹⁵																																																																																																																										
Eim	only \$8 ⁹⁵																																																																																																																										
Serenity	only \$8 ⁹⁵																																																																																																																										
Birch	only \$8 ⁹⁵																																																																																																																										
Kansas	only \$11 ²⁰																																																																																																																										
Oak	only \$11 ²⁰																																																																																																																										
Mediterranean	only \$13 ⁹⁵																																																																																																																										
Cedar	only \$13 ⁹⁵																																																																																																																										
Buckskin	only \$13 ⁹⁵																																																																																																																										
Cedar	only \$13 ⁹⁵																																																																																																																										
Jamestown	only \$14 ⁶⁶																																																																																																																										
Hickory	only \$14 ⁶⁶																																																																																																																										
Golden	only \$5 ⁸⁹																																																																																																																										
Surfer	only \$5 ⁸⁹																																																																																																																										
Mist	only \$5 ⁸⁹																																																																																																																										
Surfer	only \$5 ⁸⁹																																																																																																																										
Maple	only \$6 ¹⁴																																																																																																																										
City	only \$6 ¹⁴																																																																																																																										
Pineview	only \$6 ¹⁹																																																																																																																										
High Noon	only \$6 ¹⁹																																																																																																																										
Klamath	only \$6 ³⁴																																																																																																																										
Cedar	only \$6 ³⁴																																																																																																																										
Copper Hill	only \$7 ⁴¹																																																																																																																										
Hickory	only \$7 ⁴¹																																																																																																																										
Early Spring	only \$7 ⁴¹																																																																																																																										
Fawn	only \$7 ⁴¹																																																																																																																										
Abitibi	only \$11 ¹⁸																																																																																																																										
Windworn	only \$11 ¹⁸																																																																																																																										
Cedar Mill	only \$5 ⁷⁵																																																																																																																										
Brown	only \$5 ⁷⁵																																																																																																																										
Masonite	only \$13 ¹⁶																																																																																																																										
White Brick	only \$13 ¹⁶																																																																																																																										
Masonite	only \$13 ¹⁶																																																																																																																										
Red Brick	only \$13 ¹⁶																																																																																																																										
Masonite	only \$13 ¹⁶																																																																																																																										
Tan Brick	only \$13 ¹⁶																																																																																																																										
PRE CUTS	only \$1 ⁴⁵																																																																																																																										
12'	only \$2 ¹⁶																																																																																																																										
10'	only \$1 ⁸⁰																																																																																																																										
14'	only \$2 ⁵²																																																																																																																										
16'	only \$2 ⁸⁸																																																																																																																										
8'	only \$2 ⁰⁸																																																																																																																										
10'	only \$2 ⁶⁰																																																																																																																										
12'	only \$3 ¹²																																																																																																																										
14'	only \$3 ⁶⁴																																																																																																																										
16'	only \$4 ¹⁶																																																																																																																										
8'	only \$4 ⁵⁶																																																																																																																										
10'	only \$5 ⁷⁰																																																																																																																										
12'	only \$6 ⁸⁴																																																																																																																										
14'	only \$7 ⁹⁸																																																																																																																										
16'	only \$9 ¹²																																																																																																																										
18'	only \$10 ²⁶																																																																																																																										
20'	only \$11 ⁴⁰																																																																																																																										
#381	2.1 Cubic Inch 1.8 Horsepower 14" WSH Bar	only \$125 ⁹⁵																																																																																																																									
#49SP	3 Cubic Inch 3 Horsepower 16" WSH Bar	only \$265 ⁴⁵																																																																																																																									
#52E	3 Cubic Inch 3.2 Horsepower 18" WSH Bar	only \$314 ⁹⁵																																																																																																																									
#70E	4.2 Cubic Inch 4.4 Horsepower 20" WSH Bar	only \$386 ⁹⁵																																																																																																																									
<h3>Andersen WINDOW WALLS</h3> <p>When you buy, build, remodel!</p> <h2 style="font-size: 2em;">30% OFF DELIVERED</h2> <p>Andersen's list prices on all windows and doors in stock</p> <ul style="list-style-type: none"> • Awning Windows • Casement Windows • Narrowline Windows • Gliding Windows • Gliding Doors <p>Easy-going windows for kitchen remodeling.</p>	<h3>VARIABLE SPEED, REVERSING DRILL</h3> <p>2.7 amp motor; 0-1300 rpm. Double insulated. #584</p> <p>\$22⁹⁹ SFX.</p>	<h3>7 1/4" CIRCULAR SAW</h3> <p>Big 1 hp motor cuts 2 2/3" at 90°, 1 7/8" at 45°. Sawdust ejector, blade wrench included. #538</p> <p>\$34⁹⁹ SFX.</p>	<h3>SKIL ROUTER</h3> <p>Rout, groove, dado, mortise, rabbet. Heavy 1/2 hp motor turns at 27,000 rpm. Eye shield. #548</p> <p>\$34⁹⁹ SFX.</p>	<h3>STEEL PRE-HUNG ENTRANCE DOORS</h3> <p>2-8 x 6-8 D-1</p> <p>\$88⁶⁹</p> <p>Keylock optional</p>	<h3>INSULATION VALUES OWENS-CORNING</h3> <p>SAVE!!</p> <table style="font-size: 0.8em;"> <tr><td>3 1/2" x 16" FOIL FACED (covers 88.12 sq. ft.)</td><td>only \$10⁹⁵</td></tr> <tr><td>6" x 15" ATTIC INSULATION (covers 48.96 sq. ft.)</td><td>only \$8⁸⁹</td></tr> <tr><td>3 1/2" x 24" FOIL FACED (covers 135.12 sq. ft.)</td><td>only \$16⁷⁹</td></tr> <tr><td>6" x 24" ATTIC INSULATION (covers 75.07 sq. ft.)</td><td>only \$13⁶³</td></tr> <tr><td>6" x 15" FOIL FACED (covers 48.96 sq. ft.)</td><td>only \$9⁹⁵</td></tr> <tr><td>6" x 24" FOIL FACED (covers 75.07 sq. ft.)</td><td>only \$15²²</td></tr> </table>	3 1/2" x 16" FOIL FACED (covers 88.12 sq. ft.)	only \$10 ⁹⁵	6" x 15" ATTIC INSULATION (covers 48.96 sq. ft.)	only \$8 ⁸⁹	3 1/2" x 24" FOIL FACED (covers 135.12 sq. ft.)	only \$16 ⁷⁹	6" x 24" ATTIC INSULATION (covers 75.07 sq. ft.)	only \$13 ⁶³	6" x 15" FOIL FACED (covers 48.96 sq. ft.)	only \$9 ⁹⁵	6" x 24" FOIL FACED (covers 75.07 sq. ft.)	only \$15 ²²																																																																																																										
3 1/2" x 16" FOIL FACED (covers 88.12 sq. ft.)	only \$10 ⁹⁵																																																																																																																										
6" x 15" ATTIC INSULATION (covers 48.96 sq. ft.)	only \$8 ⁸⁹																																																																																																																										
3 1/2" x 24" FOIL FACED (covers 135.12 sq. ft.)	only \$16 ⁷⁹																																																																																																																										
6" x 24" ATTIC INSULATION (covers 75.07 sq. ft.)	only \$13 ⁶³																																																																																																																										
6" x 15" FOIL FACED (covers 48.96 sq. ft.)	only \$9 ⁹⁵																																																																																																																										
6" x 24" FOIL FACED (covers 75.07 sq. ft.)	only \$15 ²²																																																																																																																										
<h3>PLYWOOD & SHEATHING</h3> <table style="font-size: 0.8em;"> <tr><td>3/8"—4x8 CDX</td><td>8.04</td></tr> <tr><td>1/2"—4x8 3-Ply CDX</td><td>9.45</td></tr> <tr><td>3/4"—4x8 T&G Underlayment</td><td>16.59</td></tr> <tr><td>1"—4x8 T&G Styrofoam</td><td>7.04</td></tr> </table>	3/8"—4x8 CDX	8.04	1/2"—4x8 3-Ply CDX	9.45	3/4"—4x8 T&G Underlayment	16.59	1"—4x8 T&G Styrofoam	7.04	<h3>Financing available</h3> <p>We can assist you in applying for a home improvement loan. Stop in and ask for details!</p>	<h2 style="font-size: 3em;">STANDARD</h2> <p>Supply & LUMBER</p> <p>318 S. Jefferson Lansing 527-0170 Hours: Mon-Fri 8-5 Saturday 8-Noon</p>	<h3>VARIABLE SPEED JIG SAW</h3> <p>1/3 hp motor. Squeeze trigger adjusts speed. Adjusting knob "locks in" speed advances. Foot tilts 45° right or left. #497</p> <p>\$29⁹⁹</p>																																																																																																																
3/8"—4x8 CDX	8.04																																																																																																																										
1/2"—4x8 3-Ply CDX	9.45																																																																																																																										
3/4"—4x8 T&G Underlayment	16.59																																																																																																																										
1"—4x8 T&G Styrofoam	7.04																																																																																																																										