









Our Michigan.

There is talk of establishing a district telegraph in East Saginaw. The wheat crop in Cass county is represented as being very poor.

A clerk in a Detroit gun store owns 32 dogs and a tame raven. Detroit House of Correction has now 638 inmates; 407 men, and 181 women.

Examinations for admittance to the State Normal School will take place Tuesday, September 15.

Another bank, under the State banking law, and a capital of \$25,000 to \$50,000, is to be opened at Hillsdale.

The Rev. E. P. Hammond, the evangelist, is to labor at East Saginaw this fall.

Dr. Reynolds, the red-ribbon orator, will remain in Michigan during the remainder of the year.

The Agricultural College nine defeated the Jackson Mutuals at base ball on the 29th, by a score of 8 to 6.

Residents of Plainwell are circulating a petition for the removal of the Sheriff of Allegan county on account of negligence in office.

On Thursday, September 6, 1877, the surviving members of the Twenty-second Michigan Infantry will hold their twelfth annual reunion at Pontiac.

The provision dealers of Hillsdale got into trouble about the flour trade one day last week, and that commodity tumbled from \$9 to \$5 50 per barrel.

Twenty seven more inmates of the Jackson prison have been taken to the new lunatic prison.

Elmer Boyce, living at Alganssee, fell from a straw stack a few days since, and landed on the sharp end of a pitchfork, one of the prongs of which pierced his thigh and protruded on the other side.

The Michigan Tribune office, of Battle Creek, was purchased the other day by Chas. E. Barnes and Geo. W. Buckley, of Woonnough & Badine.

Farmers at Northville complain of the ravages of an insect they call the corn bug. Sometimes as many as twenty-two of these destructive creatures are found on one ear of corn.

The St. Clair Republican office is for sale. The death of the late editor and proprietor, Mr. Hazard P. Wands, thus throws this good old newspaper property on the market.

Mr. Talbert, of Vernon, lost a young heifer on July 24. August 14 he found her in an old house in a field, the treacherous door of which imprisoned her for three weeks, without a mouthful of food or drink. When she came out she acted as if crazy, starting for the cattle near by.

Messrs. J. L. Sobring & Co. have purchased about 75,000 bushels of wheat since harvest. This is less than half what they took during the month of August, 1876—then they shipped 400 car loads, 160,000 bushels. Kalamazoo is not a very extensive wheat market this season, the crop "panning out" about one-half the average.—Kalamazoo Telegraph.

On the 29th Mr. Waldron, a rich farmer living near Ada, Kent county, while standing on a bridge with his team and wagon heavily loaded with wheat waiting to have his load bought, a rotten stringer gave way, precipitating bridge and all into the stream below. Waldron was nearly drowned before rescued, and received internal injuries which will probably prove fatal.

News Notes.

"Sam Randall is confident." So was Tilden.

The fighting in Asia Minor is a minor part of the war.

Cupid complains of a dull year at the Summer resorts.

The Motto of the lovers is "E pluribus unum, yum!"

There are five lines of telephones in operation in New York.

The word you hold back is your slave, the word you say, your master.

Why are darned hose like dead men? Because they are mended (men dead).

The application of soda immediately destroys the smarting pain of sunburn.

Why is the song "Knocking at the door" like a high rate of speed? Because it is rapidly (rappy ditty).

The friends of Oakley Hall declare that he is effectually lost to the world. The world will not weep.

"Old Probs" has rented the house in Washington formerly occupied by the British Minister.

At the cattle show: Gentleman with solemnity—"Miss Florence, do you love beasts?" Lady, with vivacity—"Am I to consider that as a proposal?"

New York detectives are now convinced that Charley Ross murdered Benj. Nathan, and is concealing himself to escape the consequences of his crime.

It is proposed in Indiana to change the marriage service so as to read: "Who dare take this woman?" And the bridegroom shall answer, "I dare."

A scientific authority states that a single female house fly will produce in one season 20,000,000 eggs. Great gun! What must the married ones do?

JAMES H. WEEKS—

INSURANCE, REAL ESTATE, COLLECTION and LOAN AGENCY, CONVEYANCING, and NOTARY PUBLIC.

Desirable Property for sale and to rent.

Resident Agent for Insurance Co. of North America Assets, over \$5,000,000. Surplus over all liabilities \$3,000,000 rates as low as any first-class company.

Special attention given to Collectors, and prompt returns made.

LOANS EFFECTED ON REAL ESTATE SECURITY.

OFFICE IN TRAIN'S BUILDING, WEST SIDE, UP STAIRS.

H. W. AVERY,

DEALER IN

Fresh Meats,

Poultry,

Oysters.

ALL KINDS OF GAME IN SEASON.

CASH

PAID FOR ALL KINDS OF

Live Stock, Salt Pork, Hides

Pelts &c

Central Market, Bridge Street.

H. W. AVERY.

HARNESS.

COLLAR,

TRUNK STORE

(Nearly opposite Low National Bank.)

LIGHT & DRAFT HARNESS,

COLLARS & HORSE CLOTHING

ROBES AND BLANKETS Whips

AND TRUNKS.

Collars manufactured and sold at Wholesale and Retail.

REPAIRING

Done on short notice and at reasonable rates.

All Work Warranted

E. FULLER.

No People in the World

suffer as much with NEURALGIC or RHEUMATIC complaints as Americans, and no nation is so prolific in remedies to cure, yet we come in contact every day with scores who are suffering without having found the cure they have sought for.

TO ANYONE WHO HAS USED

LAWSON'S CURATIVE

we need only say that it is compounded with the most scientific skill and care as heretofore, and maintains the deserved reputation which it has acquired by the wonderful cures it has performed.

It has stood the test of years, based on its intrinsic merits, and nearly every community possesses some living evidence of its pain-destroying and curative properties.

Eminent and Skillful Physicians

use the Curative largely in their practice, and prominent clergymen and editors recommend it from a knowledge of its effects. Had we space we could give hundreds of certificates from parties well known in this community; but we beg to refer to our pamphlet, which is to be had of Druggists, or will be sent by mail on application. All the certificates are entirely voluntary, and emanate from persons of standing and respectability, and who may be communicated with by letter, or in person.

Rheumatism and Neuralgia

Read the following testimonials from well-known citizens of Cleveland:

CLEVELAND, O., July 6, 1874.

LAWSON CHEMICAL CO.: GENTS: I have been laid up with Rheumatism three long months so I could not walk; have tried all medicines and treatments which I could bear, but no cure until I used LAWSON'S CURATIVE, which I can recommend to sufferers from Rheumatism, for it cured me in three days so that I could attend to my business.

I have written the above for the benefit of those that suffer with this disease.

R. M. HOWE, 214 Ontario street.

(From George Scholey, the Popular Hair Dresser.)

CLEVELAND, O., November 4, 1876.

LAWSON CHEMICAL COMPANY: For over a year I was a great sufferer from Neuralgia in my head; tried almost every remedy that I could hear of; was told by physicians that I ought to try a change of climate. A lady recommended Lawson's Curative. I procured a bottle and am pleased to say that the intense pain was removed almost instantly. Have used four bottles. I consider the disease entirely cured.

Very truly yours,

Geo. H. SCHOLEY.

Rheumatism, Neuralgia, Pityriasis, Swollen Joints, Headache, Sprains, Cramps, Diphtheria, Scleritis, Toothache, Sore Throat, Dyspepsia, Chills, Burns, Scalds,

All yield to the magic influence of the Curative, no matter how long standing. It is only necessary to use it faithfully and perseveringly, according to the full directions which accompany each bottle, and you will surely be relieved.

LAWSON'S CURATIVE

is Healing and Cooling to Wounds, Sores, Burns and Scalds.

Try it and you will never be without it.

Price \$1.00 per bottle, 6 bottles for \$5.00.

PREPARED BY Lawson Chemical Co., Cleveland, Ohio.

Sold by all Druggists.

J. C. WEST, Agent.

THE VERY LATEST!

Special Dispatch

TO THE LOWELL JOURNAL!

WANTED!

The Citizens of Lowell and adjoining towns

to know that

J. M. Weatherwax,

Has the Largest and Best assortment of

BOOTS & SHOES

He Ever Had.

SPECIAL BARGAINS IN LADIES

Walking Shoes and Slippers.

A large and Elegant line of

Dress Goods!

CHEAP.

Also a large line of

Cassimeres, Broadcloths, Diagonal

SUITINGS,

And the BOSS TAILOR to Make them.

Come and see for Yourself.

J. M. Weatherwax,

Union Block, - Lowell, Mich.

N. B.

HURRAH FOR BLAIN.

Dealer in

DRY GOODS,

DRY GOODS,

DRY GOODS.

HATS & CAPS,

HATS & CAPS

Carpetings and Oil Cloths,

NOTIONS, &c.

NOTIONS, &c.

Clothing Made to

ORDER,

AND WARRANTED TO FIT.

My stock of Goods will always be found Fresh and of the best styles that can be selected for this market. Prices as low as at Grand Rapids or elsewhere.

Opposite Lowell National Bank, Lowell, Mich

N. B. BLAIN.

HIGH PRICES IN MUSLINS SWEEPED FROM THE FACE OF THE EARTH

WE TUMBLE THEM TO-DAY THEY HAVE NEVER BEEN TUMBLED BEFORE.

HEAVY YARD WIDE UNBLEACHED MUSLINS 50 CENTS. EXTRA QUALITY YARD-WIDE ATLANTIC SHEETINGS, 5 CENTS.

The above muslins are of a very superior quality, their real value being from 8 to 9 cents. To prevent other merchants from buying them all up and leaving our customers out in the cold we have decided not to sell more than one full piece to any one person. To our friends we would say these muslins will go off like wild fire, and unless you are active will be all sold before you know it.

MUSLINS AT SUCH PRICES WILL TEMPT EVERYBODY.

GOOD NEWS TO CARPET BUYERS-CARPETS LOWER THAN LAST YEAR.

Cottage Carpets 20—last year 25c. Better Carpets 25—last year 45c. Ingrain Carpets 40—last year 50c. Ingrains 50 & 60—last year 60 & 75 English Tapestry Br. Lace Curtains 10, 15 and 20. The above assortment of Carpets is by far the finest, handomest and most desirable ever exhibited in Grand Rapids.

Bargains for Prints—Good Dark Prints 4c, and 5c. Best Sprague Prints, 6 Cents.

We are glad to say that in consequence of the great stagnation of business in New York this Spring, millions of dollars of the following named goods have been the market there and sold at an enormous sacrifice. Of these goods we have bought largely and now offer

Dress Goods, Shawls, ilks, Suits, Alpacaos, Cassimeres, Percaloes, Cambrics Table Linens, Napkins, Cassimeres, Cottonades, quilts, Linens. Sheetings, Shirtsings etc.

At prices averaging one third less than two weeks ago. See quotations below.

Handsome Dress Goods 10 and 11 1/2c. Good All Wool Black Cassimeres, 75c. Good Shawls 75c, \$1 and \$1.25. Fine Dress Goods 25, 30 and 34c. Fine Paisley Shawls \$2, \$3 and \$10. Fine Maltese Cloths, 25c. Fine Black Cassimeres 50, 65 and 75c. Good Cotton Sun Umbrellas 25c up. Good Silk Sun Umbrellas, 75c up. Good Cottonades 15, 20 and 25c. Nice Cassimeres 50c. Fine All Wool Cassimeres 65c. Good Hosiery, 10 and 12 1/2c a pair. Cheviot Shirtsings 10 and 12 1/2c. Good Table Linens 35, 40 and 50c.

FOSTER BROTHERS, Grand Rapids, Fort Wayne, New York & Terre Haute.

Forman's Harness SHOP!

On Flat River Bridge, LOWELL, MICH.

E. A. FORMAN, PROP.

Light and Draft Harness, made to order and warranted.

Robes, Blankets, Whips, Collars, Etc., a good stock on hand, for sale at low figures.

TAMMING AND UPHOLSTERING Done in first-class style. The patronage of the public is respectfully solicited.

E. A. FORMAN.

NOTICE is hereby given, that Edwin R. Peck and Harriet A. Bradley, composing the firm of Peck and Bradley, doing business as General Dealers in Groceries and Provisioners, have this 20th day of June A. D. 1877, mutually dissolved our partnership, and have assigned to each other, and to William H. Eddy, for the benefit of our creditors all our stock in trade, and every species of indebtedness to us and all our assets of every kind, including the entire of our Real Estate and Personal Properties, save that which we have reserved in our assignment, by virtue of the law of Michigan. The said William H. Eddy, our assignee, is empowered by virtue of our said assignment, to settle all claims against us according to the conditions of said assignment, and to collect all bills of account, promissory notes, or evidence of debt which were our favor.

Edwin R. Peck, Harriet A. Bradley, Edwin H. Eddy.

NOTICE TO THE PUBLIC. Whereas, my wife Louisa Raymond, has left my bed and board without just cause or provocation, this is to give notice to any and all persons not to harbor or trust the said Louisa Raymond on my account as I shall pay no debts contracted by her after this date.

Dated July 28 1877. 4w6 MARVIS RAYMOND.

The bed my husband speaks of above you will find where your mother hid it the week before I left you, and the board I would have liked to have cooked for you, I could not, as the stove we got that I would have liked to have used to cook your board, your mother had returned to Shepard's hardware store, and as for going treated on your account I would not without seeing your Guardian.

LOUISA RAYMOND.

Ayer's Sarsaparilla

For Scrofula, and all scrofulous diseases, Erysipelas, Rose or St. Anthony's Fire, Eruptions and Eruptions of the skin, Ulcerations of the Liver, Stomach, Kidneys, Lungs, Pimples, Pustules, Boils, Rheumatism, Neuralgia, Pain in the Bones, Side and Head, Female Weakness, Sterility, Leucorrhoea, arising from internal ulceration, and uterine disease, Syphilitic and Mercurial diseases, Dropsy, Dyspepsia, Emaciation, General Debility, and for Purifying the Blood.

This Sarsaparilla is a combination of vegetable alteratives—Stillingia, Mandrake, Yellow Dock—with the Iodides of Potassium and Iron, and is the most efficacious medicine yet known for the diseases it is intended to cure.

Its ingredients are so skillfully combined that the full alternative effect of each is assured, and while it is so mild as to be harmless even to children, it is still so effectual as to purge out from the system those impurities and corruptions which develop into loathsome disease.

The reputation it enjoys is derived from its cures, and the confidence which prominent physicians all over the country repose in it proves their experience of its usefulness.

Certificates attesting its virtues have accumulated, and are constantly being received, and as many of these cases are publicly known, they furnish convincing evidence of the superiority of this Sarsaparilla over every other alterative medicine. So generally is its superiority to any other medicine known that we need do no more than to assure the public that the best qualities it has ever possessed are strictly maintained.

PREPARED BY Dr. J. C. AYER & CO., Lowell, Mass., Practical and Analytical Chemists, SOLD BY ALL DRUGGISTS EVERYWHERE.

Detroit and Milwaukee Railroad

The Old Reliable Route to all points East and West. Through Cars Daily.

GOING EAST. Fast Express 7:35 A.M. Through Mail 11:44 A.M. Evening Express 5:48 P.M. Mixed to Owosso 2:00 P.M. Through Freight 6:20 P.M.

GOING WEST. Sunday Night Mixed 7:35 A.M. Through Freight 5:00 A.M. Night Express 5:40 A.M. Through Mail 5:02 P.M. Owosso Mixed 12:40 P.M. Fast Express 10:54 P.M.

Through tickets to all principal points East and West. Through tickets to all principal points East and West. Through tickets to all principal points East and West.

COSING OUT. CLOSING OUT.

CLOSING OUT. Balance of Spring and Summer Stock!!!

Many Goods at Cost. Many Goods Below Cost.

Suits actually worth \$7.50 now offered at \$5.00. Suits actually worth \$10 now offered at \$6.50. Suits actually worth \$12 now offered at \$8.50. Coats and Vests cheap at \$10 now offered at \$7.50. Coats and Vests sold before at \$12 now for \$8.50. Boys Suits \$1.50, \$2 and \$3.50. Boys Suits for \$4 and \$5 actually worth 50 per cent more.

Mens All Wool Pants, \$2 \$3 and \$3.00. Mens all Wool Coats Job lot odd Sizes, at 2, 2.50 & \$3.00. Worth 5 to \$8.

Mens' White Vests ONLY 75c worth 1.25. Summer Coats 25c. Heavy Linen Pants for 85c. Worth 1.25. Fancy Shirts and 2 COLLARS 60c, 65c, 90.

All goods to be sacrificed to make room for our

FALL STOCK. COME AT ONCE.

Star Clothing House, 38, 40 and 42, CANAL ST. GRAND RAPIDS

GLORIOUS NEWS!

THE BOSTON SQUARE DEALING HOUSE

Has Opened With an Immense and entire new stock of

Dry Goods, Clothing, Hats, Caps, Ladies' and Gents' FURNISHING GOODS, TRUNKS, SATCHELS, ETC., ETC.

At Astonishing Low Prices.

LOOK AT THESE PRICES, COMPARE THEM WITH ANY IN THE STATE and JUDGE for YOURSELF.

DRY GOODS CLOTHING

Best Prints, 5 to 6 cents. Sheetings 4-4 wide 6 to 8 cents. Bleached Muslin 8 to 10 cents. Ladies Skirts, 35 to 75 cents. Ladies Shawls, 75 cents upward. Cotton Hose, Good, 3 pairs for 25c. Good Gingham 8 to 10 cents. Coats and Clark thread per spool, 10c.

Good Working Suits, \$4.00 to \$5.00. Mens' Working Pants \$1.00 to 1.50. Brown and Blue Overalls, 50c, sold elsewhere for \$1.00. Mens Socks, 3 pairs for 25 cents. Trunks, 75 cents.

Good Dress Suits \$4 to \$10.00. Good Cassimere pants \$2.50 upward. Collars, Linen Finish 10c per Box. Shirts and Drawers, 25 cents each. Hats and Caps 35 cents upward.

ALL OTHER GOODS TOO NUMEROUS TO MENTION, IN PROPORTION.

ALL THESE PRICES ARE BELOW ANY IN THE STATE!

We Have Come to Stay,

AND TO SELL GOODS AT A SMALL PROFIT AND AT One Price Only!

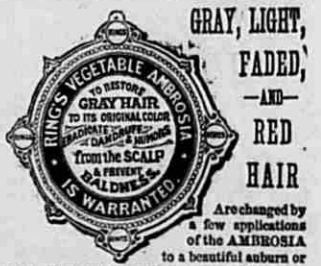
NO HUMBBUG! NO SHAM!!

YOU CAN SAVE 25 Cents on Every Dollar By Buying Your Goods Of

M. JACOBSON & CO.

BOSTON SQUARE DEALING HOUSE,

PULLEN BLOCK, - - - - - LOWELL, MICH.



GRAY, LIGHT, FADED, RED HAIR. Eradicator. Prepared by E. M. Tubbs & Co. Proprietors of "King's Ambrosia," Manchester, N. H. J. Q. Look, Agent.



Prepared by E. M. Tubbs & Co. Proprietors of "King's Ambrosia," Manchester, N. H. J. Q. Look, Agent.



SQUARE DEALING HOUSE

Has Opened With an Immense and entire new stock of

Dry Goods, Clothing, Hats, Caps, Ladies' and Gents' FURNISHING GOODS, TRUNKS, SATCHELS, ETC., ETC.

At Astonishing Low Prices.

LOOK AT THESE PRICES, COMPARE THEM WITH ANY IN THE STATE and JUDGE for YOURSELF.

DRY GOODS CLOTHING

Best Prints, 5 to 6 cents. Sheetings 4-4 wide 6 to 8 cents. Bleached Muslin 8 to 10 cents. Ladies Skirts, 35 to 75 cents. Ladies Shawls, 75 cents upward. Cotton Hose, Good, 3 pairs for 25c. Good Gingham 8 to 10 cents. Coats and Clark thread per spool, 10c.

Good Working Suits, \$4.00 to \$5.00. Mens' Working Pants \$1.00 to 1.50. Brown and Blue Overalls, 50c, sold elsewhere for \$1.00. Mens Socks, 3 pairs for 25 cents. Trunks, 75 cents.

Good Dress Suits \$4 to \$10.00. Good Cassimere pants \$2.50 upward. Collars, Linen Finish 10c per Box. Shirts and Drawers, 25 cents each. Hats and Caps 35 cents upward.

ALL OTHER GOODS TOO NUMEROUS TO MENTION, IN PROPORTION.



# SUPPLEMENT TO THE LOWELL JOURNAL.

## SALE OF STATE TAX LANDS.

**AUDITOR GENERAL'S OFFICE,**  
LANSING, MICH., July 2, 1877.

Notice is hereby given that certain lands, situated in the county of Kent, bid off to the State for taxes of 1875 and previous years, and described in statements which will be forwarded to the office of the Treasurer of said county some time in September, will be sold at public auction, by said Treasurer, at the county seat, on the first Monday of October next, at the time and place designated for the ordinary tax sales, if not previously disposed of at this office, according to law.

Said statements contain a full description of each parcel of said lands, and may be seen on application at the office of the County Treasurer.

Lands struck off to the State for taxes of 1875 or other years, at the tax sales in October last, will be offered subject to the right of redemption prescribed by law, as well as to the right of purchase of the State bids at this office, prior to the sale.

**RALPH ELY, Auditor General.**

## ANNUAL TAX SALES.

**AUDITOR GENERAL'S OFFICE,**  
LANSING, MICH., July 2, 1877.

So much of each of the following described tracts or parcels of land, situated in the county of Kent, delinquent for unpaid taxes, for the years mentioned below, as will be sufficient to pay the taxes, interest, and charges thereon, will be sold by the Treasurer of said county, on the first Monday of October next, at such public and convenient place as he shall select in Grand Rapids, the county seat of said county, according to the statute in such case made and provided.

**RALPH ELY, Auditor General.**

### 1856.

Town 7 North, of Range 11 West.

Section.	Acres.	100ths.	Taxes.	Interest.	Charges.	Total.
n 10 acres of n e 1/4 of s e 1/4 of n 20 acres of n e 1/4 of e 1/4.....	31	15	\$2 85	11 68	\$1 00	\$15 53

1858.

Town 10 North, of Range 11 West.

und 1/2 of s 1/2 of s e 1/4.....	7 80		83	3 07	1 00	4 90
Town 10 North, of Range 12 West.						
e 1/2 of n e 1/4.....	23 80		3 48	12 87	1 00	17 35

1867.

CITY OF GRAND RAPIDS.

Van Buren and Turner's Addition.

lots 9 and 10, blk 5.....			12 73	24 18	1 00	37 91
---------------------------	--	--	-------	-------	------	-------

1868.

Town 6 North, of Range 11 West.

all soil of 'r of Plaster creek on the w 1/2 of e 1/2 of n e 1/4.....	11 8		2 33	3 96	1 00	7 29
---	------	--	------	------	------	------

1869.

CITY OF GRAND RAPIDS.

Coit & Company's Addition.

lots 10 and 11, blk 6.....			17 81	26 71	1 00	45 52
----------------------------	--	--	-------	-------	------	-------

1872.

Kent Plat.

24 ft. in width on side mill lot J.....			19 76	17 73	1 00	38 54
---	--	--	-------	-------	------	-------

1873.

Kent Plat.

24 ft. in width on side mill lot J.....			23 14	16 19	1 00	40 33
---	--	--	-------	-------	------	-------

1875.

Town 6 North, of Range 9 West.

commencing at n e corner of s e 1/4, s 26 rods, s 16 rods, s 10 rods, n to Husted n e corner, w to 1/2 line, n to 1/2 stake in center of sec 8, e to beginning, less 34 acres of s side.....	8 38		14 12	4 23	1 00	19 35
--	------	--	-------	------	------	-------

Town 10 North, of Range 10 West.

e 1/2 of s w 1/4.....	23 80		9 80	2 94	1 00	13 74
-----------------------	-------	--	------	------	------	-------

Town 8 North, of Range 11 West.

n 1/2 of n w 1/4, and s e 1/4 of n w 1/4.....	5 135		18 7 67	2 30	1 00	10 97
---	-------	--	---------	------	------	-------

CITY OF GRAND RAPIDS.

a piece of land containing about 7 acres, lying w of and adjoining Grandville ave, bounded on the w by D. W. Coit's land, n by J. A. Rusey's land, e by Grandville ave, running to a point on Grandville ave, intersecting the same at south end.....

	43 20		12 96	1 00		57 16
--	-------	--	-------	------	--	-------

Town 7 North, of Range 12 West.

s w 1/4 of s w 1/4 of s e 1/4.....	35		6 49	1 94	1 00	9 43
------------------------------------	----	--	------	------	------	------

## CITY OF GRAND RAPIDS.

Long's Addition.

lots 21 and 22, block 3.....			\$24 02	47 38	\$1 00	\$33 00
------------------------------	--	--	---------	-------	--------	---------

Scribner and Turner's Addition.

s 22 1/2 ft lot 8, block 19, and house.....			20 26	6 07	1 00	27 33
---	--	--	-------	------	------	-------

Tregent's Sub-division of Tregent's Addition.

lot 59.....			1 94	58 1 00		3 52
lot 61.....			1 94	58 1 00		3 52
lot 62.....			1 94	58 1 00		3 52
lot 63.....			1 94	58 1 00		3 52
lot 64.....			1 94	58 1 00		3 52

Withey's Addition.

64 1/2 ft front and rear by 88 ft n and s commencing 64 1/2 ft w of n e corner of lot 1, block 3.....			8 15	2 44	1 00	11 59
---	--	--	------	------	------	-------

VILLAGE OF ROCKFORD.

s pt. of lot 44.....	36 30		62 78	18 83	1 00	82 61
----------------------	-------	--	-------	-------	------	-------

Atwater and Capen's Plat, Town 7 North, of Range 11 West.

lot 7, block 2.....			51	15 1 00		1 66
---------------------	--	--	----	---------	--	------

1876.

Town 5 North, of Range 9 West.

e 1/2 of n e 1/4.....	1 80		3 00	30 1 00		4 30
e 1/2 of s w 1/4.....	4 80		12 68	1 26 1 00		14 94
s e 1/4 of n w 1/4.....	8 40		1 98	19 1 00		3 17
s w 1/4 of n e 1/4.....	8 40		1 98	19 1 00		3 17
w 1/2 of s e 1/4.....	17 80		9 54	96 1 00		11 49
e 1/2 of s e 1/4.....	30 80		12 94	1 29 1 00		15 23
w 1/2 of s e 1/4.....	30 80		10 97	1 00 1 00		13 06
n 1/2 of n e 1/4.....	31 80		13 42	1 34 1 00		15 76
w 1/2 of n w 1/4.....	31 80		10 18	1 61 1 00		14 79
s e 1/4 of.....	31 100		23 25	2 82 1 00		32 07

Town 6 North, of Range 9 West.

land bounded n by highway, w by L. J. Robinson's land, w by highway, s by Z. Hulls land, and q. r. line, e by E. Chey's land.....	35 18		51 47	5 14 1 00		57 61
---	-------	--	-------	-----------	--	-------

Town 8 North, of Range 9 West.

e 1/2 of n w 1/4.....	7 80		12 32	1 23 1 00		14 55
e 1/2 of s e 1/4.....	8 80		15 18	1 51 1 00		17 69

Town 9 North, of Range 9 West.

n e 1/4 of s w 1/4.....	5 40		4 82	48 1 00		6 20
s w 1/4 of e 1/4.....	4 40		4 07	40 1 00		5 47
s e 1/4 of s w 1/4.....	5 40		4 82	48 1 00		6 30
s pt of lot 1 of.....	9 28		2 40	24 1 00		3 64
n e 1/4 of s e 1/4.....	9 40		3 60	36 1 00		4 96

Town 10 North, of Range 9 West.

lot 4 of.....	11 51		6 69	66 1 00		8 35
lot 6 of.....	11 49		6 69	66 1 00		8 35
lot 2 of.....	11 34		5 52	55 1 00		7 07
w pt of n 1/2 of 114.....	204 35		29 96	2 99 1 00		33 85
n w 1/4 of s w 1/4.....	14 40		3 83	38 1 00		5 21
lot 3 of.....	14 35		3 94	39 1 00		5 33
w pt of lot 4 of.....	14 52		4 73	47 1 00		6 20
e pt of lot 4 of.....	14 4 50		7 9	07 1 00		1 86

Town 10 North, of Range 9 West.

land bounded n by highway, w by L. J. Robinson's land, w by highway, s by Z. Hulls land, and q. r. line, e by E. Chey's land.....	35 18		51 47	5 14 1 00		57 61
---	-------	--	-------	-----------	--	-------

Town 10 North, of Range 9 West.

n 1/2 of n e 1/4.....	2 96		56 12 10	1 21 1 00		14 31
s e 1/4 of s e 1/4.....	2 40		5 06	50 1 00		6 56
n w 1/4 of n w 1/4.....	5 48		9 6	50 1 00		6 53
s w 1/4 of s w 1/4.....	5 80		9 65	96 1 00		11 61
s w 1/4 of n e 1/4.....	5 40		6 33	63 1 00		7 96
s w 1/4 of e 1/4.....	5 80		6 20	62 1 00		7 82
n 1/2 of s e 1/4.....	7 40		3 89	38 1 00		5 27
n e 1/4 of n w 1/4.....	8 80		10 00	1 06 1 00		12 06
n e 1/4 of.....	8 160		23 39	2 33 1 00		26 72
s e 1/4 of n w 1/4.....	8 40		3 89	38 1 00		5 27
n e 1/4 of s e 1/4.....	11 40		9 91	99 1 00		11 90
s w 1/4 of n e 1/4.....	13 85		9 11	91 1 00		11 02
lot 3 of.....	13 57		12 15	1 21 1 00		14 36
n w 1/4 of s e 1/4.....	14 40		8 54	85 1 00		10 39
s w 1/4 of s e 1/4.....	14 40		9 14	91 1 00		11 05
s w 1/4 of n e 1/4.....	14 40		9 89	98 1 00		11 87
lot 1, except w 40 acres.....	14 21		4 96	49 1 00		6 45
lot 2 of.....	14 57		5 71	57 1 00		7 28
s w 1/4 of n w 1/4.....	17 80		4 87	48 1 00		6 33
w 1/2 of s w 1/4.....	17 80		9 65	96 1 00		11 61

Town 10 North, of Range 9 West.

n 1/2 of n e 1/4.....	18 20		1 95	19 1 00		3 14
n e 1/4 of s e 1/4.....	18 40		3 89	38 1 00		5 27
n e 1/4 of n e 1/4.....	18 40		4 67	48 1 00		6 35
s w 1/4 of n e 1/4.....	18 40		4 87	48 1 00		6 35
s 1/2 of n w 1/4.....	18 78		9 95	92 1 00		11 18
n w 1/4 of n w 1/4.....	18 88		9 15	91 1 00		11 06
n w 1/4 of n e 1/4.....	20 40		4 01	40 1 00		5 41
n w 1/4 of.....	20 20		2 00	20 1 00		3 20
w 1/2 of s e 1/4.....	23 80		15 23	1 52 1 00		17 75
w 1/2 of s e 1/4.....	24 80		10 15	1 01 1 00		12 16
s w 1/4 of n w 1/4.....	24 40		4 85	48 1 00		6 33
n e 1/4 of n w 1/4.....	24 40		6 07	60 1 00		7 67
s e 1/4 of n e 1/4.....	24 40		6 07	60 1 00		7 67

Town 7 North, of Range 9 West.

n w 1/4 of n w 1/4.....	20 20		2 00	20 1 00		3 20
n w 1/4 of n e 1/4.....	23 80		15 23	1 52 1 00		17 75
w 1/2 of s e 1/4.....	24 80		10 15	1 01 1 00		12 16
s w 1/4 of n w 1/4.....	24 40		4 85	48 1 00		6 33
n e 1/4 of n w 1/4.....	24 40		6 07	60 1 00		7 67
s e 1/4 of n e 1/4.....	24 40		6 07	60 1 00		7 67

Town 7 North, of Range 9 West.

n w 1/4 of n w 1/4.....	20 20		2 00	20 1 00		3 20
n w 1/4 of n e 1/4.....	23 80		15 23	1 52 1 00		17 75
w 1/2 of s e 1/4.....	24 80		10 15	1 01 1 00		12 16
s w 1/4 of n w 1/4.....	24 40		4 85	48 1 00		6 33
n e 1/4 of n w 1/4.....	24 40		6 07	60 1 00		7 67
s e 1/4 of n e 1/4.....	24 40		6 07	60 1 00		7 67

## Town 7 North, of Range 9 West.

Section.	Acres.	100ths.	Taxes.	Interest.	Charges.	Total.
s 1/2 of n e 1/4.....	11 40		\$19 28	\$1 92	\$1 00	\$22 20
n 1/2 of s e 1/4.....	11 40		5 78	57 1 00		7 35
n 1/2 of n w 1/4.....	11 20		3 48	34 1 00		4 82
s e 1/4 of s e 1/4.....	22 40		3 60	36 1 00		4 96

Town 10 North, of Range 9 West.

e 1/2 of s e 1/4.....	24 80		\$10 15	\$1 01	\$1 00	\$12 16
s e 1/4 of n w 1/4.....	24 40		6 07	60 1 00		7 67
n e 1/4 of n w 1/4.....	24 40		6 07	60 1 00		7 67
n e 1/4 of n e 1/4.....	24 40		6 07	60 1 00		7 67
e 1/2 of n e 1/4.....	25 80		12 15	1 21 1 00		14 36
s w 1/4 of n e 1/4.....	25 40		5 77	57 1 00		7 34
n w 1/4 of n e 1/4.....	25 40		5 77	57 1 00		7 34
w 1/2 of e 1/4 of n.....	25 40		5 16	51 1 00		6 67
w 1/2 of.....	25 40		5 16	51 1 00		6 67
n e 1/4 of s e 1/4.....	25 40					



Town 9 North, of Range 10 West.

Table with columns: Section, Acres, Taxes, Interest, Charges, Total. Contains land descriptions for various sections in Town 9 North, Range 10 West.

Town 8 North, of Range 11 West.

Table with columns: Section, Acres, Taxes, Interest, Charges, Total. Contains land descriptions for various sections in Town 8 North, Range 11 West.

Town 7 North, of Range 11 West.

Table with columns: Section, Acres, Taxes, Interest, Charges, Total. Contains land descriptions for various sections in Town 7 North, Range 11 West.

Town 7 North, of Range 11 West.

Table with columns: Section, Acres, Taxes, Interest, Charges, Total. Contains land descriptions for various sections in Town 7 North, Range 11 West.

Town 9 North, of Range 11 West.

Table with columns: Section, Acres, Taxes, Interest, Charges, Total. Contains land descriptions for various sections in Town 9 North, Range 11 West.

Town 10 North, of Range 11 West.

Table with columns: Section, Acres, Taxes, Interest, Charges, Total. Contains land descriptions for various sections in Town 10 North, Range 11 West.

Town 7 North, of Range 12 West.

Table with columns: Section, Acres, Taxes, Interest, Charges, Total. Contains land descriptions for various sections in Town 7 North, Range 12 West.

Town 7 North, of Range 12 West.

Table with columns: Section, Acres, Taxes, Interest, Charges, Total. Contains land descriptions for various sections in Town 7 North, Range 12 West.

CITY OF GRAND RAPIDS.

Table with columns: Section, Acres, Taxes, Interest, Charges, Total. Contains land descriptions for various sections in the City of Grand Rapids.



CITY OF GRAND RAPIDS.

Table with columns: Block, Taxes, Interest, Charges, Total. Includes descriptions of land parcels and their locations.

CITY OF GRAND RAPIDS. Burton & Co.'s Subdivision.

Table with columns: Block, Taxes, Interest, Charges, Total. Includes descriptions of land parcels and their locations.

CITY OF GRAND RAPIDS. Colt & Curtis' Partition Plat.

Table with columns: Block, Taxes, Interest, Charges, Total. Includes descriptions of land parcels and their locations.

CITY OF GRAND RAPIDS. Dexter Fraction.

Table with columns: Block, Taxes, Interest, Charges, Total. Includes descriptions of land parcels and their locations.

CITY OF GRAND RAPIDS. Grant's Addition.

Table with columns: Block, Taxes, Interest, Charges, Total. Includes descriptions of land parcels and their locations.

CITY OF GRAND RAPIDS. Homestead Addition.

Table with columns: Block, Taxes, Interest, Charges, Total. Includes descriptions of land parcels and their locations.

CITY OF GRAND RAPIDS. Kent Plat.

Table with columns: Block, Taxes, Interest, Charges, Total. Includes descriptions of land parcels and their locations.

CITY OF GRAND RAPIDS. Long's Addition.

Table with columns: Block, Taxes, Interest, Charges, Total. Includes descriptions of land parcels and their locations.



